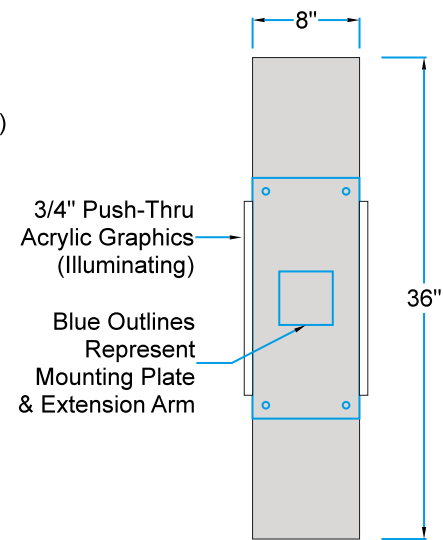
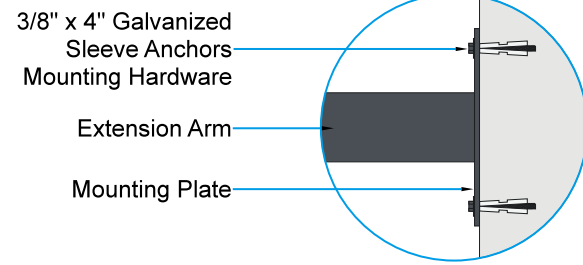


E1 Elevation: (Qty: 1) #10569 Double Sided Blade Sign
36" x 36" = 9 Sq. Ft.



S1 Side View



M1 Mounting Detail View

Description:
(Qty: 1) Double sided blade sign with illuminating push-thru graphics and opaque faces.
 * .125" Aluminum faces with tack-welded 1-1/2" internal returns
 * Painted aluminum returns
 * 4" Square aluminum extension arm and 1/2" aluminum mounting plate
 * 3/4" Clear Acrylic push-thru graphics with flooded vinyl faces and White vinyl back-ups
 * LED illumination, power pack located inside sign body
 * Note: Only "DD" to illuminate, faces are opaque

Typeface/Logo:
 * Art on File

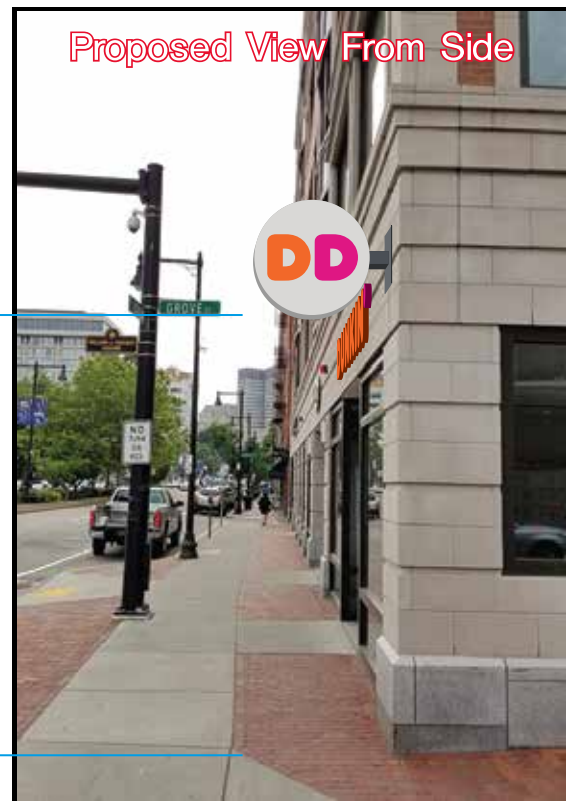
Colors:
 * Faces - Painted Cool Gray PMS #1c
 * Returns - Painted Cool Gray PMS #1c
 * Ext. Arm - Painted Dark Gray PMS #7540c (BM Raccoon Fur #2126-20)
 * Plate - Painted Dark Gray PMS #7540c (BM Raccoon Fur #2126-20)
 * LEDs - White
 * 3/4" Acrylic - Clear
 * Vinyl Floods - DD Orange trans 3M #3630-3123
 - DD Magenta trans 3M #3630-1379
 - White trans (back-ups)

Installation:
 * By ViewPoint
 * Note: Power by Others
 * This sign is intended to be installed in accordance with the requirements of Article 600 of the National Electrical Code (NEC) and/or other applicable Local Electrical Codes (LEC). This includes proper grounding and bonding of the sign.



Existing Front View

Centered with Column



Proposed View From Side

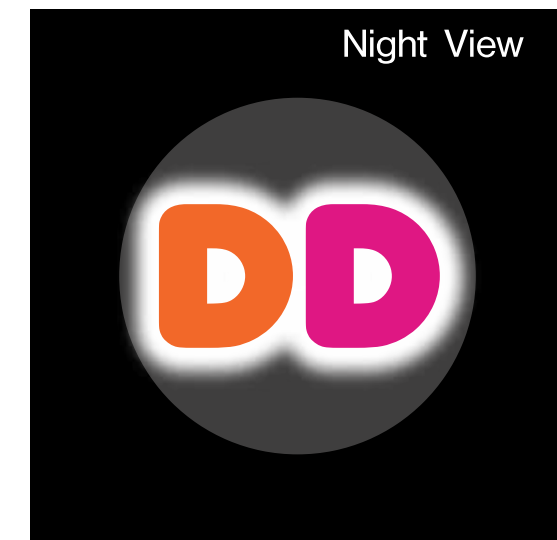


Proposed View From Front

11'-5" +/-
From Grade

11'-5" +/-
From Grade

PE Photo Elevation Views: Proposed & Existing



Night View

Job: Dunkin' Donuts
 Location: 296 Cambridge St., Boston, MA
 Account Manager: Sean Donovan
 File: DD BosMA 296CambSt blade 1a.plt
 Date: 06.28.19 D1.0
 Designer: Pete Rivera

Revisions: Revisions:



ViewPoint
SIGN AND AWNING

1.508.393.8200
FAX 1.508.393.4244

Customer Approval Acct. Manager Approval Production Approval