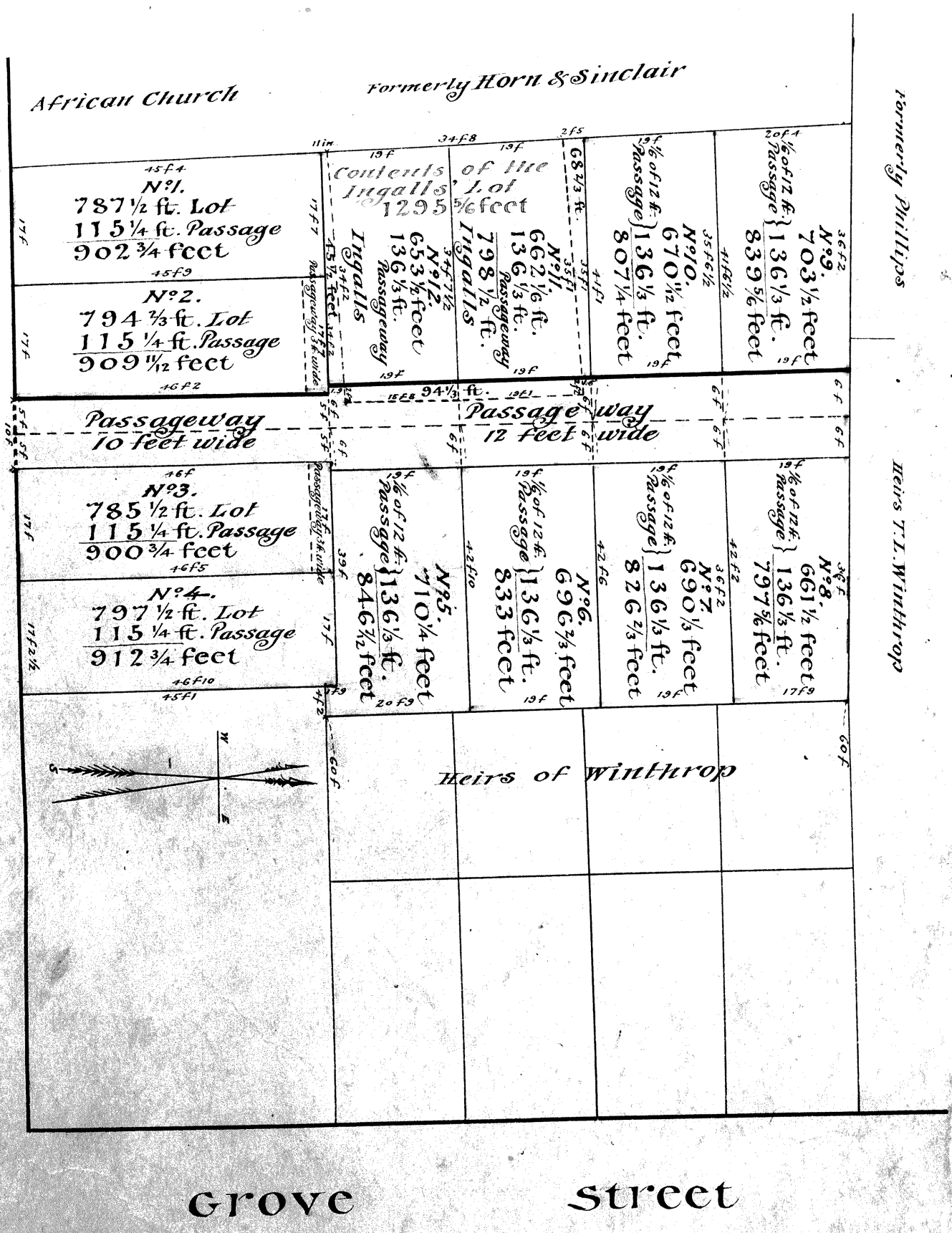
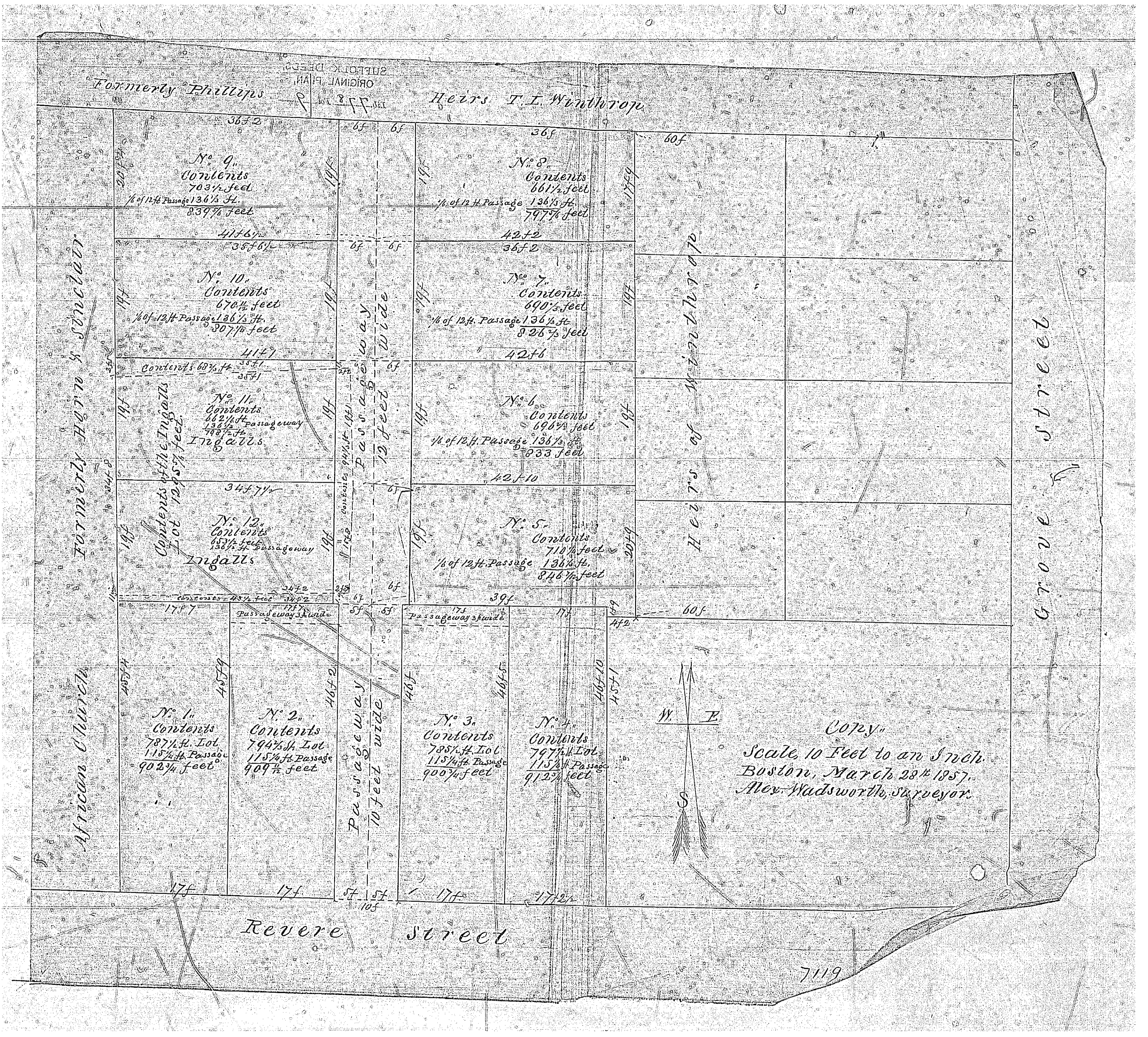


REVERE STREET



copy
Scale, 10 feet to an inch.
Boston, March 28th 1857.
Alex. Wadsworth, Surveyor.

Plan Recorded
Lib. 778 Fol. 9
A True Copy. Reduced 1
Henry W. Wilson c.e.



Formerly Phillips

Heirs T. I. Winthrop

Formerly Harris & Sturtevant

Formerly Church

Grove Street

Revere Street

No. 9.
Contents
703 1/2 feet
1/4 of 12 ft. Passage 136 1/2 ft.
839 7/8 feet

No. 10.
Contents
670 1/2 feet
1/4 of 12 ft. Passage 136 1/2 ft.
807 1/4 feet

No. 11.
Contents
662 1/4 ft. Passageway
748 1/2 ft.
Ingalls

No. 12.
Contents
653 1/2 ft. Passageway
738 1/2 ft.
Ingalls

No. 1.
Contents
787 1/2 ft. Lot
115 1/4 ft. Passage
902 3/4 feet

No. 2.
Contents
794 1/2 ft. Lot
115 1/4 ft. Passage
909 1/2 feet

No. 3.
Contents
785 1/2 ft. Lot
115 1/4 ft. Passage
900 1/4 feet

No. 4.
Contents
797 1/2 ft. Lot
115 1/4 ft. Passage
912 3/4 feet

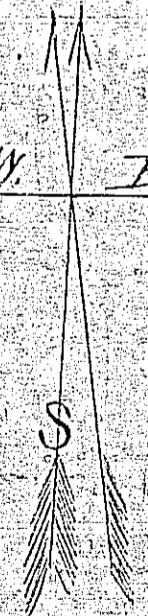
No. 8.
Contents
661 1/2 feet
1/4 of 12 ft. Passage 136 1/2 ft.
797 7/8 feet

No. 7.
Contents
690 1/2 feet
1/4 of 12 ft. Passage 136 1/2 ft.
826 3/4 feet

No. 6.
Contents
690 3/4 feet
1/4 of 12 ft. Passage 136 1/2 ft.
833 feet

No. 5.
Contents
710 1/4 feet
1/4 of 12 ft. Passage 136 1/2 ft.
846 1/4 feet

W. E.



Copy
Scale 10 Feet to an Inch.
Boston, March 28th 1857.
Alex. Wadsworth, Surveyor.

7119

