



INTERIORS DRAWING SET							
Discipline	SHEET NUMBER	SHEET NAME	50% DD 06/09/17	ISSUED FOR PERMIT 08/28/17	CD ISSUE 1 09/29/17	CD ISSUE 2 11/03/2017	CD ISSUE 3 12/08/17
ID	ID00-00	INTERIOR DESIGN COVER	•	•	•	•	•
ID	ID00-01	GENERAL NOTES, SYMBOLS, ABBREVIATIONS	•	•	•	•	•
ID	ID00-02	PLUMBING MOUNTING HEIGHTS	•	•	•	•	•
ID	ID10-01	OVERALL FLOOR PLANS	•	•	•	•	•
ID	ID10-02	OVERALL FLOOR PLANS	•	•	•	•	•
ID	ID10-03	OVERALL FLOOR PLANS	•	•	•	•	•
ID	ID10-04	OVERALL FLOOR PLANS	•	•	•	•	•
ID	ID10-05	OVERALL FLOOR PLANS	•	•	•	•	•
ID	ID11-01	CORRIDOR PLANS & FINISHES	•	•	•	•	•
ID	ID11-02	CORRIDOR PLANS & FINISHES	•	•	•	•	•
ID	ID11-03	CORRIDOR ELEVATIONS	•	•	•	•	•
ID	ID11-04	CORRIDOR ELEVATIONS	•	•	•	•	•
ID	ID11-10	GUESTROOM FINISH PLANS	•	•	•	•	•
ID	ID11-11	GUESTROOM FINISH PLANS	•	•	•	•	•
ID	ID11-12	GUESTROOM FINISH PLANS	•	•	•	•	•
ID	ID11-13	GUESTROOM FINISH PLANS	•	•	•	•	•
ID	ID12-10	GUESTROOM FURNITURE PLANS	•	•	•	•	•
ID	ID12-11	GUESTROOM FURNITURE PLANS	•	•	•	•	•
ID	ID12-12	GUESTROOM FURNITURE PLANS	•	•	•	•	•
ID	ID12-13	GUESTROOM FURNITURE PLANS	•	•	•	•	•
ID	ID13-10	GUESTROOM ELEVATIONS	•	•	•	•	•
ID	ID13-11	GUESTROOM ELEVATIONS	•	•	•	•	•
ID	ID13-12	GUESTROOM ELEVATIONS	•	•	•	•	•
ID	ID13-13	GUESTROOM ELEVATIONS	•	•	•	•	•
ID	ID13-14	GUESTROOM ELEVATIONS	•	•	•	•	•
ID	ID13-15	GUESTROOM ELEVATIONS	•	•	•	•	•
ID	ID13-16	GUESTROOM ELEVATIONS	•	•	•	•	•
ID	ID13-17	GUESTROOM ELEVATIONS	•	•	•	•	•
ID	ID13-18	GUESTROOM ELEVATIONS	•	•	•	•	•
ID	ID13-19	GUESTROOM ELEVATIONS	•	•	•	•	•
ID	ID13-20	GUESTROOM ELEVATIONS	•	•	•	•	•
ID	ID14-10	GUESTROOM BATHROOM PLANS	•	•	•	•	•
ID	ID14-11	GUESTROOM BATHROOM PLANS	•	•	•	•	•
ID	ID14-12	GUESTROOM BATHROOM ELEVATIONS	•	•	•	•	•
ID	ID14-13	GUESTROOM & CORRIDOR DETAILS	•	•	•	•	•
ID	ID15-01	LOBBY FLOOR PLAN	•	•	•	•	•
ID	ID15-02	LOBBY FURNITURE PLAN	•	•	•	•	•
ID	ID15-03	LOBBY REFLECTED CEILING PLAN	•	•	•	•	•
ID	ID15-04	LOBBY ELEVATIONS	•	•	•	•	•
ID	ID15-05	LOBBY ELEVATIONS	•	•	•	•	•
ID	ID15-06	LOBBY SECTIONS	•	•	•	•	•
ID	ID15-07	LOBBY RESTROOMS AND ELEVATOR	•	•	•	•	•
ID	ID15-08	ELEVATOR LOBBY ELEVATIONS	•	•	•	•	•
ID	ID16-01	ENLARGED BAR PLAN AND ELEVATIONS	•	•	•	•	•
ID	ID16-02	ENLARGED RECEPTION DESK PLAN AND ELEVATIONS	•	•	•	•	•
ID	ID16-04	ENLARGED STAIR PLAN AND ELEVATIONS	•	•	•	•	•
ID	ID16-05	BAR DETAILS	•	•	•	•	•
ID	ID16-06	BAR AND MILLWORK DETAILS	•	•	•	•	•
ID	ID16-07	DETAILS	•	•	•	•	•
ID	ID16-08	DETAILS	•	•	•	•	•
ID	ID17-01	SCHEDULES	•	•	•	•	•

ROOM MATRIX		
ROOM NUMBER	BED TYPE	FURNITURE TYPE
LEVEL 01:		
101	KING	FK01
102	KING	FK02
103	KING	FK03
104	KING	FK04
105	KING (ADA)	FKA01
LEVEL 01: 5		
LEVEL 02:		
201	DBL QUEEN	FOQ02
202	D. QUEEN (ADA)	FOQA01
203	KING SUITE	FPS02
205	DBL QUEEN	FOQ04
206	KING	FK07
207	KING	FK08
208	KING	FK09
209	KING	FK10
210	DBL QUEEN	FOQ01
211	KING	FK11
LEVEL 02: 10		

ROOM MATRIX		
ROOM NUMBER	BED TYPE	FURNITURE TYPE
LEVEL 03:		
301	DBL QUEEN	FOQ02
302	KING	FK12
303	KING	FK13
304	KING	FK14
305	KING	FK04
306	KING	FK07
307	KING	FK08
308	KING	FK09
309	KING	FK10
310	DBL QUEEN	FOQ01
311	KING	FK11
315	KING	FK15
316	KING SUITE (ADA)	FPS03
317	KING	FK17
318	KING	FK17
319	KING	FK17
320	KING	FK16
LEVEL 03: 17		

ROOM MATRIX		
ROOM NUMBER	BED TYPE	FURNITURE TYPE
LEVEL 04:		
401	DBL QUEEN	FOQ03
402	KING	FK12
403	KING	FK13
404	KING	FK14
405	KING	FK04
406	KING	FK07
407	KING	FK08
408	KING	FK09
409	KING	FK10
410	DBL QUEEN	FOQ01
411	KING	FK11
415	KING	FK15
416	KING SUITE	FPS01
417	KING	FK17
418	KING	FK17
419	KING	FK17
420	KING	FK16
LEVEL 04: 17		

ROOM MATRIX		
ROOM NUMBER	BED TYPE	FURNITURE TYPE
LEVEL 05:		
501	DBL QUEEN	FOQ03
502	KING	FK12
503	KING	FK13
504	KING	FK14
505	KING	FK04
506	KING	FK07
507	KING	FK08
508	KING	FK09
509	KING	FK10
510	DBL QUEEN	FOQ01
511	KING	FK11
515	QUEEN (ADA)	FOA01
516	KING SUITE	FPS01
517	KING	FK17
518	KING	FK17
519	KING	FK17
520	KING	FK16
LEVEL 05: 17		

BED TYPES BREAKDOWN	
BED TYPE	
D. QUEEN (ADA): 1	
DBL QUEEN	
DBL QUEEN: 9	
KING	
KING: 50	
KING (ADA): 1	
KING SUITE	
KING SUITE: 3	
KING SUITE (ADA): 1	
QUEEN (ADA)	
QUEEN (ADA): 1	
TOTAL ROOMS: 66	

FURNITURE TYPE MATRIX		
ROOM NUMBER	FURNITURE TYPE	
FK01		
101	FK01	
FK01: 1		
FK02		
102	FK02	
FK02: 1		
FK03		
103	FK03	
FK03: 1		
FK04		
104	FK04	
205	FK04	
405	FK04	
505	FK04	
FK04: 4		
FK07		
206	FK07	
306	FK07	
406	FK07	
506	FK07	
FK07: 4		
FK08		
207	FK08	
307	FK08	
407	FK08	
507	FK08	
FK08: 4		
FK09		

FURNITURE TYPE MATRIX		
ROOM NUMBER	FURNITURE TYPE	
FK09		
208	FK09	
308	FK09	
408	FK09	
508	FK09	
FK09: 4		
FK10		
209	FK10	
309	FK10	
409	FK10	
509	FK10	
FK10: 4		
FK11		
211	FK11	
311	FK11	
411	FK11	
511	FK11	
FK11: 4		
FK12		
302	FK12	
402	FK12	
502	FK12	
FK12: 3		
FK13		
303	FK13	
403	FK13	
503	FK13	
FK13: 3		

FURNITURE TYPE MATRIX		
ROOM NUMBER	FURNITURE TYPE	
FK14		
304	FK14	
404	FK14	
504	FK14	
FK14: 3		
FK15		
315	FK15	
415	FK15	
FK15: 2		
FK16		
320	FK16	
420	FK16	
520	FK16	
FK16: 3		
FK17		
317	FK17	
318	FK17	
319	FK17	
417	FK17	
418	FK17	
419	FK17	
517	FK17	
518	FK17	
519	FK17	
FK17: 9		
FPS01		
416	FPS01	

FURNITURE TYPE MATRIX		
ROOM NUMBER	FURNITURE TYPE	
FPS01		
516	FPS01	
FPS01: 2		
FPS02		
404	FPS02	
203	FPS02	
FPS02: 1		
FOQ01		
210	FOQ01	
310	FOQ01	
410	FOQ01	
510	FOQ01	
FOQ01: 4		
FOQ02		
201	FOQ02	
301	FOQ02	
FOQ02: 2		
FOQ03		
401	FOQ03	
501	FOQ03	
FOQ03: 2		
FOQ04		
205	FOQ04	
FOQ04: 1		

FURNITURE TYPE MATRIX		
ROOM NUMBER	FURNITURE TYPE	
FKA01		
105	FKA01	
FKA01: 1		
FPS03		
316	FPS03	
FPS03: 1		
FOA01		
515	FOA01	
FOA01: 1		
FOQA01		
202	FOQA01	
FOQA01: 1		

INTERIOR DESIGN COVER

THE WHITNEY HOTEL

14 DAVID G MUGAR WAY BOSTON, MA 02114

ID00-00

SCALE:

P+W #: 157055

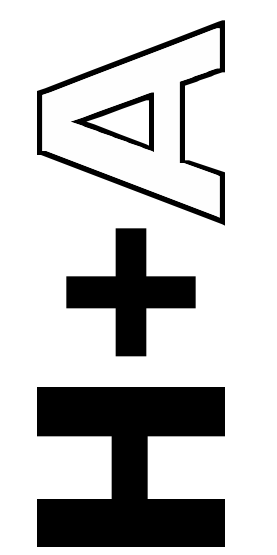
CD PROGRESS DATE: 01 DECEMBER 2017

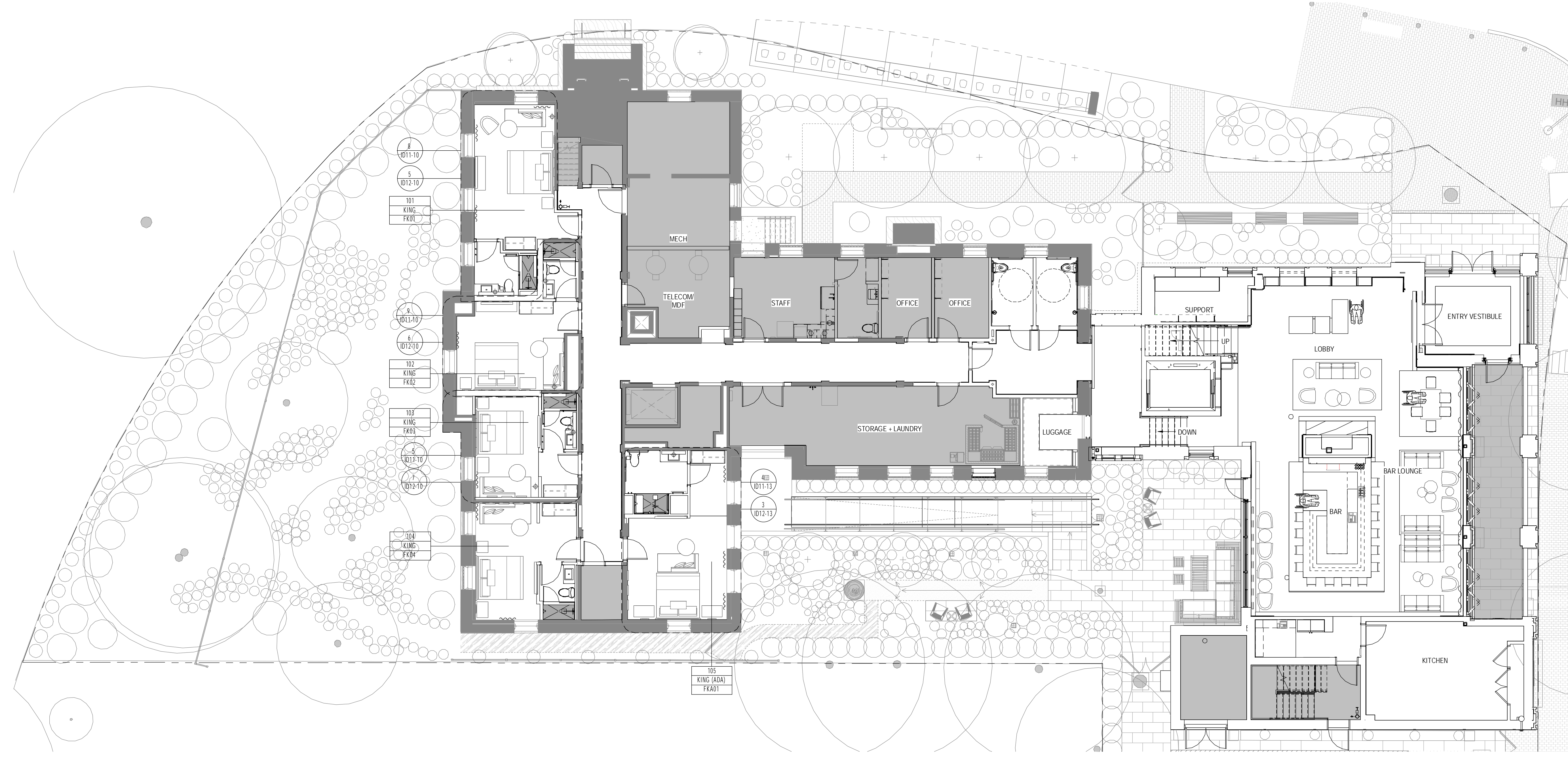
ISSUANCE NO.	DATE	ISSUED FOR
1	08/28/17	ISSUED FOR PERMIT
2	09/29/17	ISSUED FOR PERMIT
3	11/03/17	CD ISSUE 2
4	11/03/17	CD ISSUE 2
5	12/08/17	CD ISSUE 3

ARCHITECT
HACIN + ASSOCIATES
500 HARRISON AVENUE
STUDIO 4F
BOSTON, MA 02118
617.426.0077

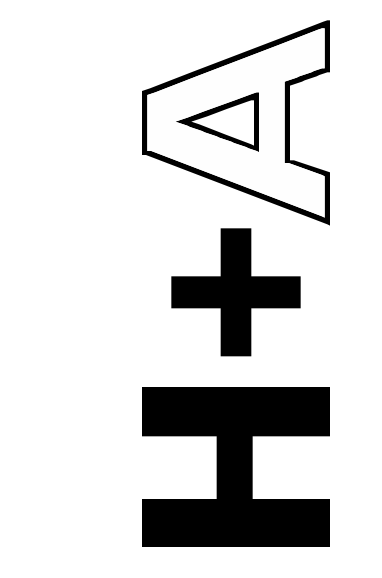
CLIENT
RELATED BEAL
177MLK STREET
ADDRESS 2
BOSTON MA

INTERIOR DESIGN
PERKINS + WILL
225 FRANKLIN STREET
SUITE 1100
BOSTON, MA 02110
617.478.0300





1 LEVEL 01 - OVERALL PLAN
1/8" = 1'-0"



INTERIOR DESIGN
PERKINS + WILL
225 FRANKLIN STREET
SUITE 1100
BOSTON, MA 02110
617.478.0300

ARCHITECT
HACIN + ASSOCIATES
500 HARRISON AVENUE
STUDIO 4F
BOSTON, MA 02118
617.426.0077

CLIENT
RELATED BEAL
177MLK STREET
ADDRESS 2
BOSTON MA

CD PROGRESS
DATE: 01 DECEMBER 2017

ISSUANCE	NO.	DATE	ISSUED FOR	ISSUE
	1	08/28/17	ISSUED FOR RFP	
	2	09/28/17	ISSUED FOR PERMIT	
	3	11/03/17	CD ISSUE 1	
	4	11/03/17	CD ISSUE 2	
	5	12/08/17	CD ISSUE 3	

OVERALL FLOOR PLANS

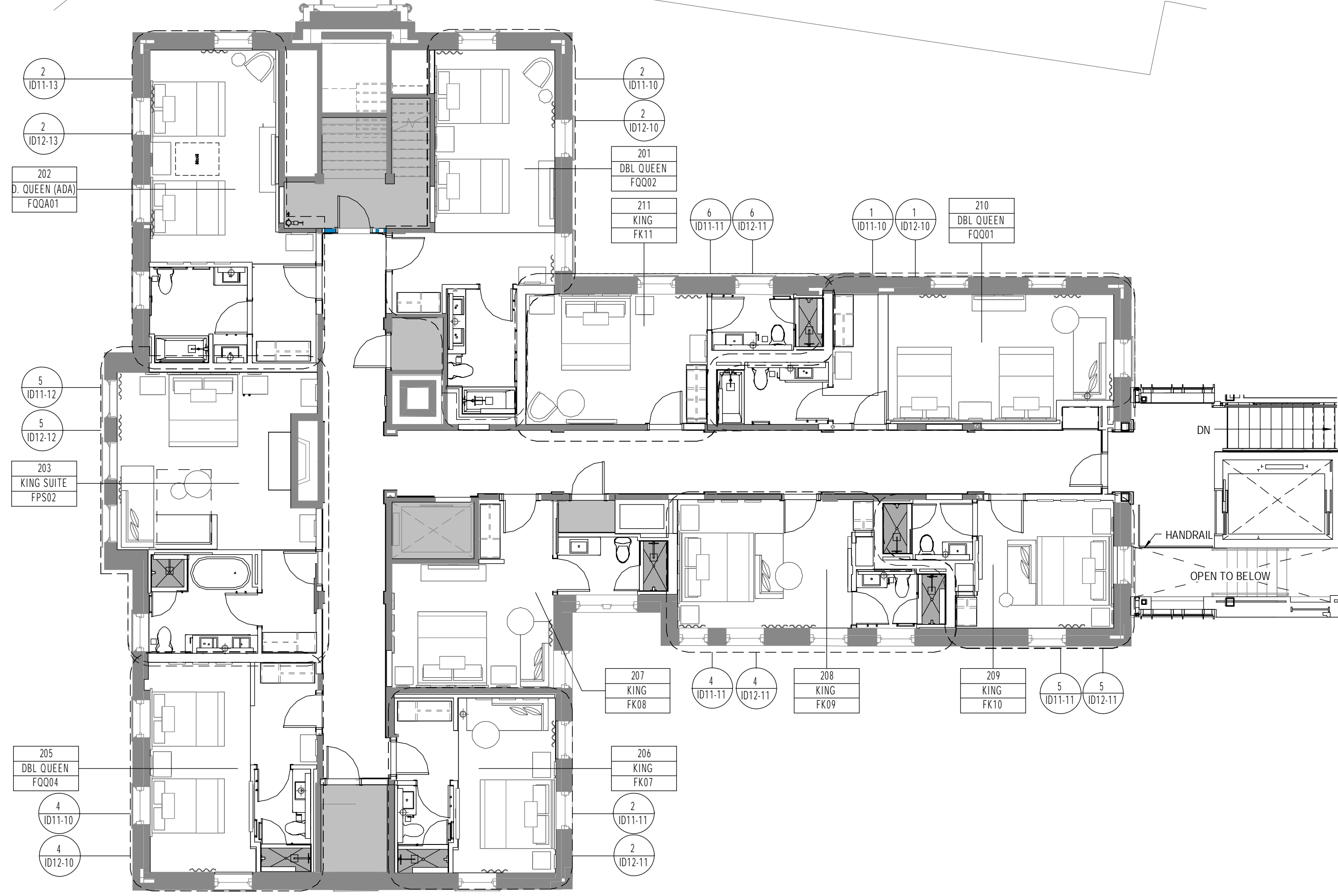
THE WHITNEY HOTEL

14 DAVID G MUGAR WAY BOSTON, MA 02114

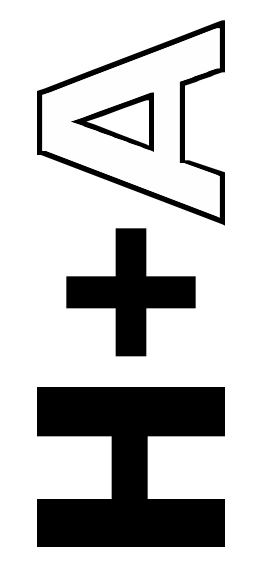
P+W #: 157055

ID10-01

SCALE: 1/8" = 1'-0"



1 LEVEL 02 - OVERALL PLAN
1/8" = 1'-0"



INTERIOR DESIGN
PERKINS + WILL
225 FRANKLIN STREET
SUITE 1100
BOSTON, MA 02110
617.478.0300

ARCHITECT
HACIN + ASSOCIATES
500 HARRISON AVENUE
STUDIO 4F
BOSTON, MA 02118
617.426.0077

CLIENT
RELATED BEAL
177 MILK STREET
ADDRESS 2
BOSTON MA

CD PROGRESS
DATE: 01 DECEMBER 2017

NO.	DATE	ISSUED FOR
1	08/28/17	ISSUED FOR RFP
2	09/28/17	ISSUED FOR PERMIT
3	11/03/17	CD ISSUE 1
4	11/03/17	CD ISSUE 2
5	12/08/17	CD ISSUE 3

OVERALL FLOOR PLANS

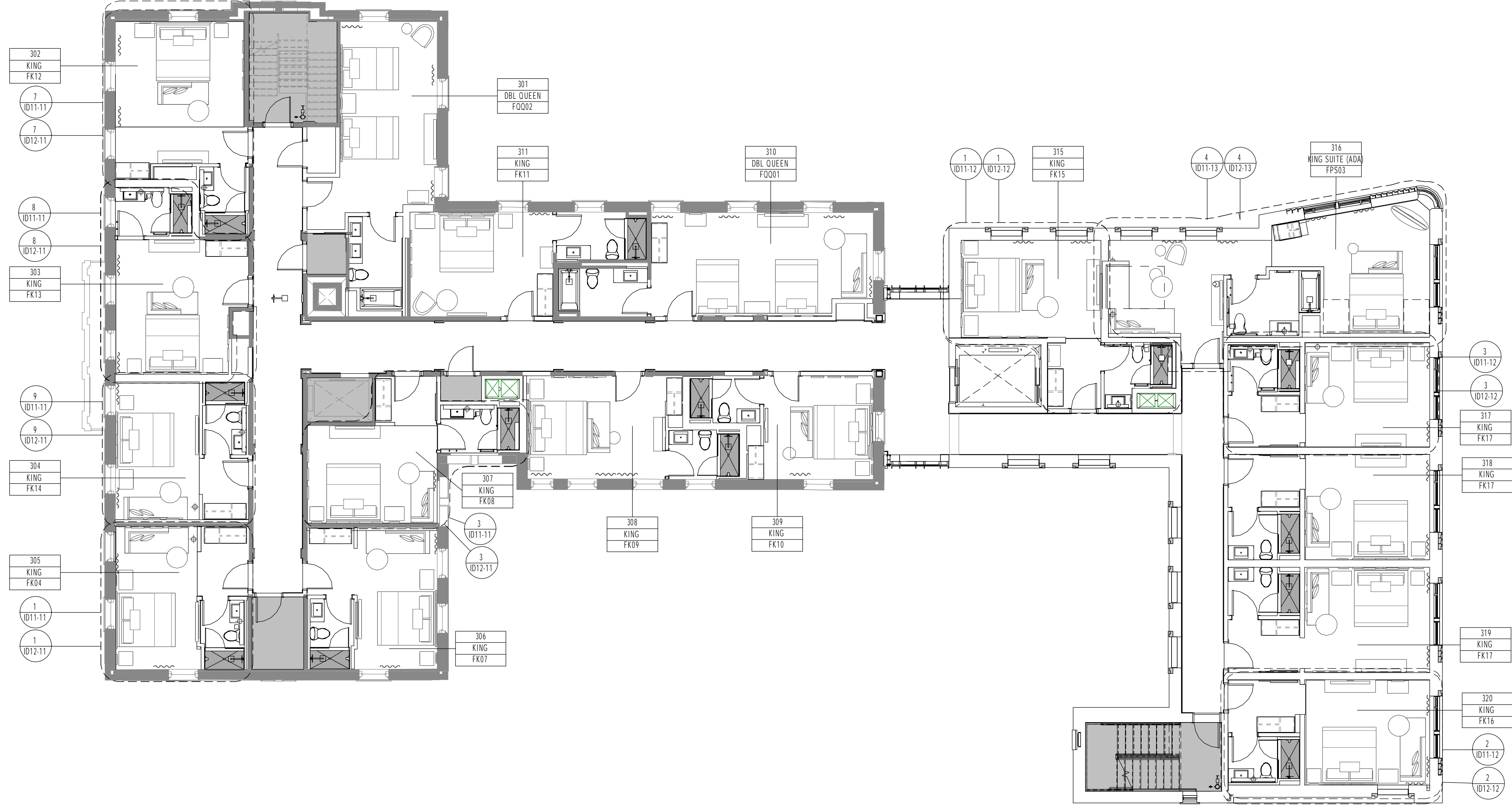
THE WHITNEY HOTEL

14 DAVID G MUGAR WAY BOSTON, MA 02114

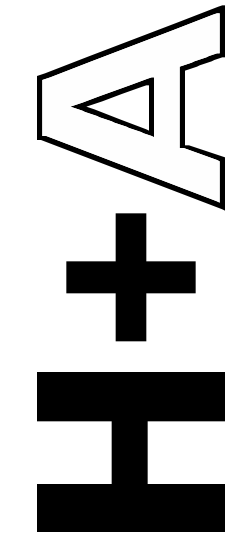
SCALE: 1/8" = 1'-0"

P+W #: 157055

ID10-02



1 LEVEL 03 - OVERALL PLAN
1/8" = 1'-0"



INTERIOR DESIGN
PERKINS + WILL
225 FRANKLIN STREET
SUITE 1100
BOSTON, MA 02110
617.478.0300

ARCHITECT
HACIN + ASSOCIATES
500 HARRISON AVENUE
STUDIO 4F
BOSTON, MA 02118
617.426.0077

CLIENT
RELATED BEAL
177MLK STREET
ADDRESS 2
BOSTON MA

CD PROGRESS
DATE: 01 DECEMBER 2017

ISSUANCE

NO.	DATE	ISSUED FOR	BY
1	09/28/17	ISSUED FOR PERMIT	11/03/17
2	09/28/17	ISSUED FOR PERMIT	11/03/17
3	11/03/17	CD ISSUE 2	11/03/17

OVERALL FLOOR PLANS

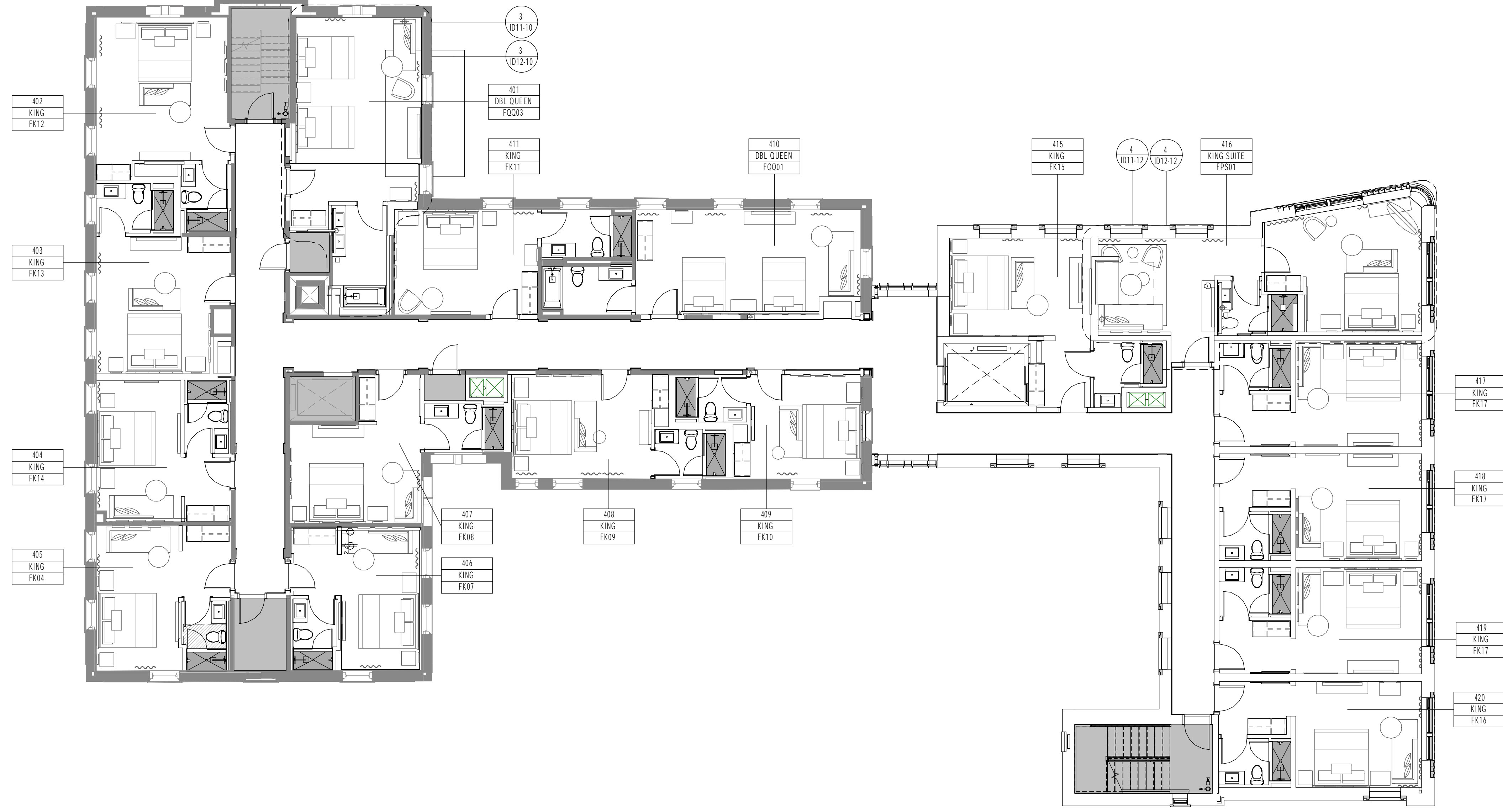
THE WHITNEY HOTEL

14 DAVID G MUGAR WAY BOSTON, MA 02114

SCALE: 1/8" = 1'-0"

P+W # : 157055

ID10-03



1 LEVEL 04 - OVERALL PLANS
1/8" = 1'-0"

OVERALL FLOOR PLANS

THE WHITNEY HOTEL

14 DAVID G MUGAR WAY BOSTON, MA 02114

SCALE: 1/8" = 1'-0"

P+W #: 157055

ID10-04

CD PROGRESS
DATE: 01 DECEMBER 2017

ISSUANCE

NO.	DATE	ISSUED FOR	BY
1	09/28/17	ISSUED FOR PERMIT	JK
2	09/28/17	ISSUED FOR PERMIT	JK
3	10/03/17	CD ISSUE 2	JK

ARCHITECT

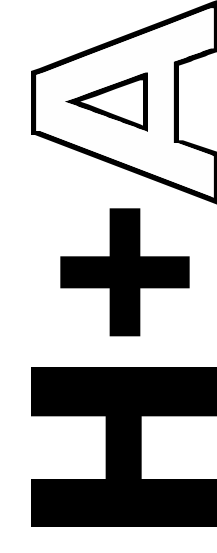
HACIN + ASSOCIATES
500 HARRISON AVENUE
STUDIO 4F
BOSTON, MA 02118
617.426.0077

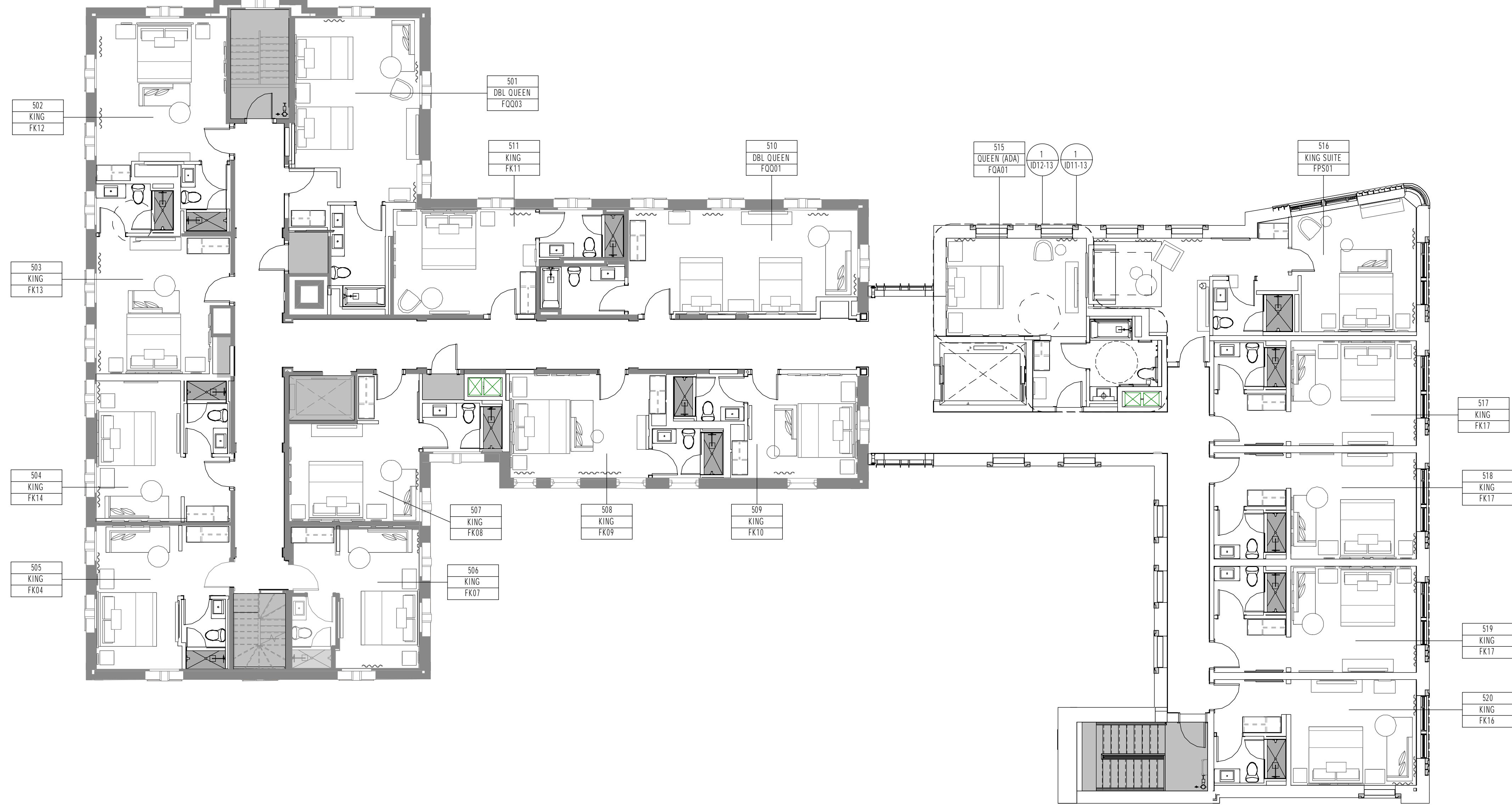
CLIENT

RELATED BEAL
177MLK STREET
ADDRESS 2
BOSTON MA

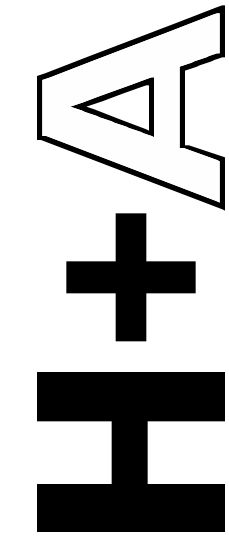
INTERIOR DESIGN

PERKINS + WILL
225 FRANKLIN STREET
SUITE 1100
BOSTON, MA 02110
617.478.0300





1 LEVEL 05 - OVERALL PLAN
1/8" = 1'-0"



INTERIOR DESIGN
PERKINS + WILL
225 FRANKLIN STREET
SUITE 1100
BOSTON, MA 02110
617.478.0300

ARCHITECT
HACIN + ASSOCIATES
500 HARRISON AVENUE
STUDIO 4F
BOSTON, MA 02118
617.426.0077

CLIENT
RELATED BEAL
177MLK STREET
ADDRESS 2
BOSTON MA

CD PROGRESS
DATE: 01 DECEMBER 2017

ISSUANCE

NO.	DATE	ISSUED FOR	BY
1	09/28/17	ISSUED FOR PERMIT	PK
2	09/28/17	ISSUED FOR PERMIT	PK
3	11/03/17	CD ISSUE 2	PK

OVERALL FLOOR PLANS

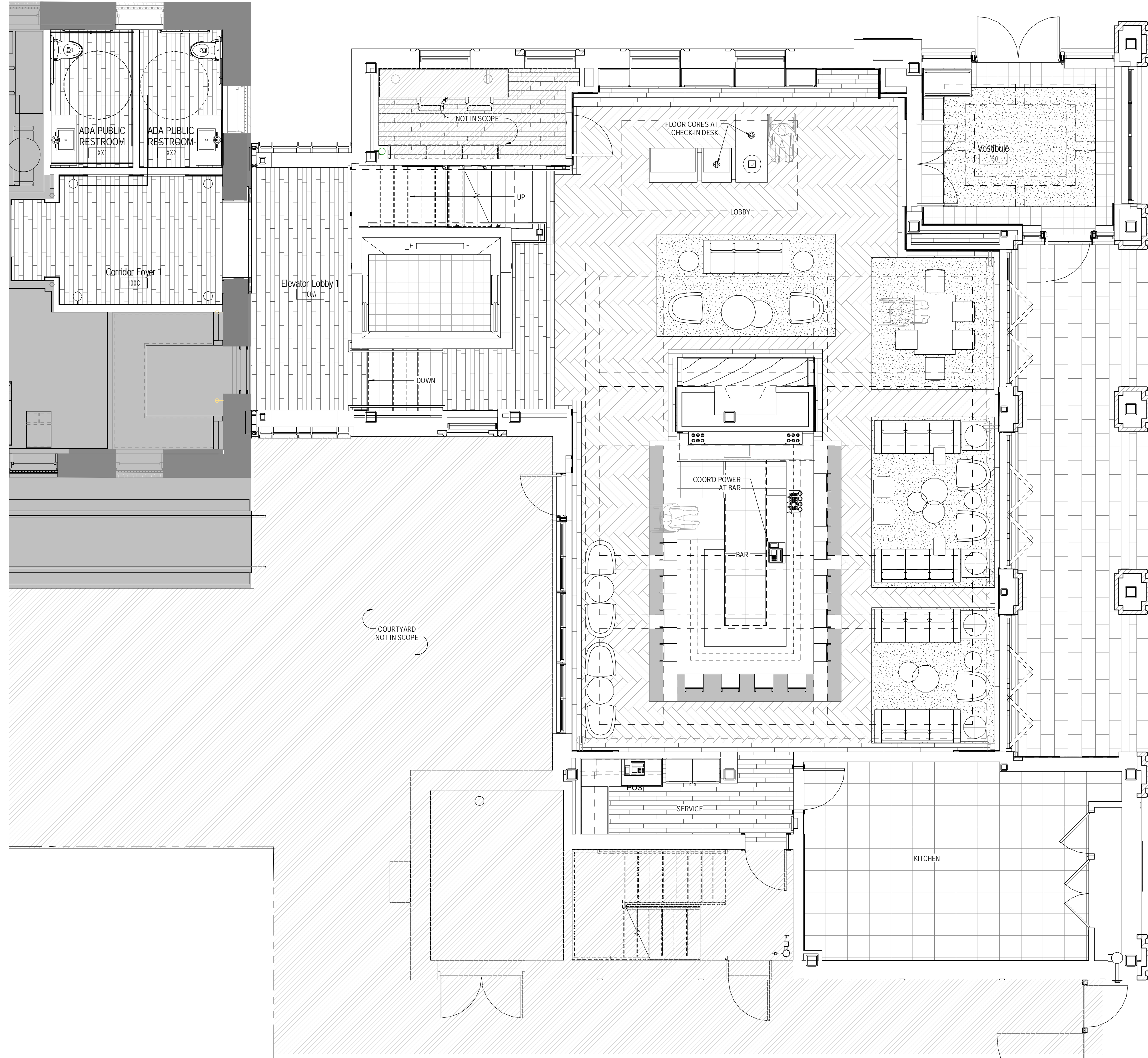
THE WHITNEY HOTEL

14 DAVID G MUGAR WAY BOSTON, MA 02114

SCALE: 1/8" = 1'-0"

P+W # : 157055

ID10-05



1 LOBBY LEVEL - FURNITURE PLAN
1/4" = 1'-0"

LOBBY FURNITURE PLAN

THE WHITNEY HOTEL

14 DAVID G MUGAR WAY BOSTON, MA 02114

SCALE: 1/4" = 1'-0"

P+W # : 157055

CD PROGRESS
DATE: 01 DECEMBER 2017

ISSUANCE	NO.	DATE	ISSUED FOR	ISSUE
	1	08/28/17	ISSUED FOR PERMIT	CD ISSUE 1
	2	09/28/17	ISSUED FOR PERMIT	CD ISSUE 2
	3	11/03/17	CD ISSUE 2	CD ISSUE 2
	4	11/03/17	CD ISSUE 2	CD ISSUE 2
	5	12/08/17	CD ISSUE 3	CD ISSUE 3

ARCHITECT
HACIN + ASSOCIATES
500 HARRISON AVENUE
STUDIO 4F
BOSTON, MA 02118
617.426.0077

CLIENT
RELATED BEAL
177MLK STREET
ADDRESS 2
BOSTON MA

INTERIOR DESIGN
PERKINS + WILL
225 FRANKLIN STREET
SUITE 1100
BOSTON, MA 02110
617.478.0300

