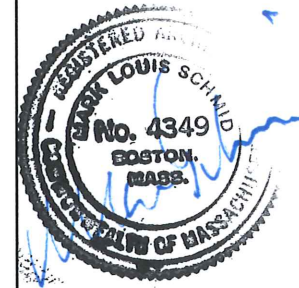
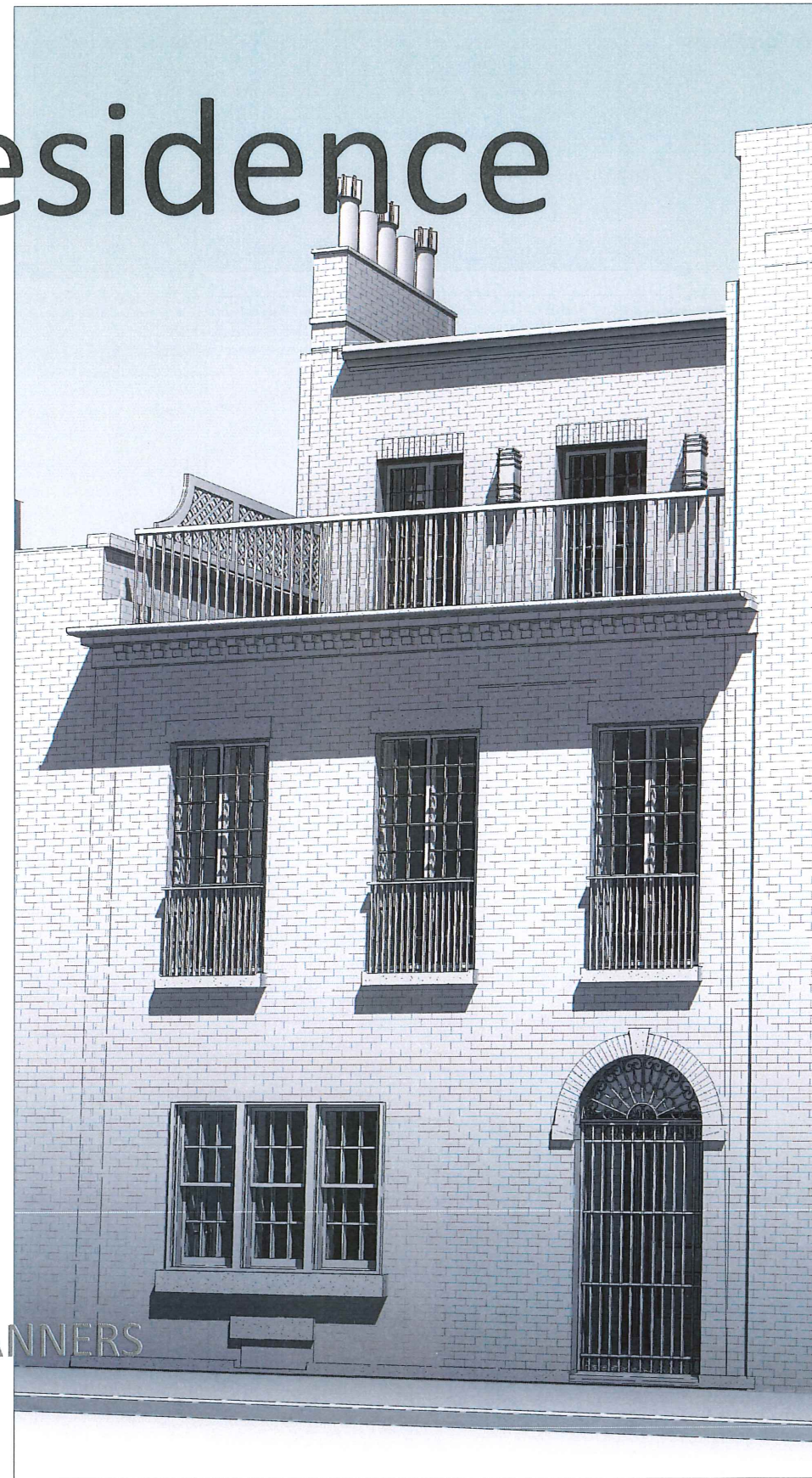


# Manioudakis Residence

83 Chestnut St,  
Boston MA

## Renovations

Addendum #2,  
5.16.2018



Manioudakis Residence  
83 Chestnut St,  
Boston MA

**DSK** | Dewing Schmid Kearns ARCHITECTS + PLANNERS

Suite 200B 30 Monument Square, Concord, MA 01742 978.371.7500

280 Elm Street, South Dartmouth, MA 02748

[www.dskap.com](http://www.dskap.com)

Howland Inc.  
CONSTRUCTION MANAGER

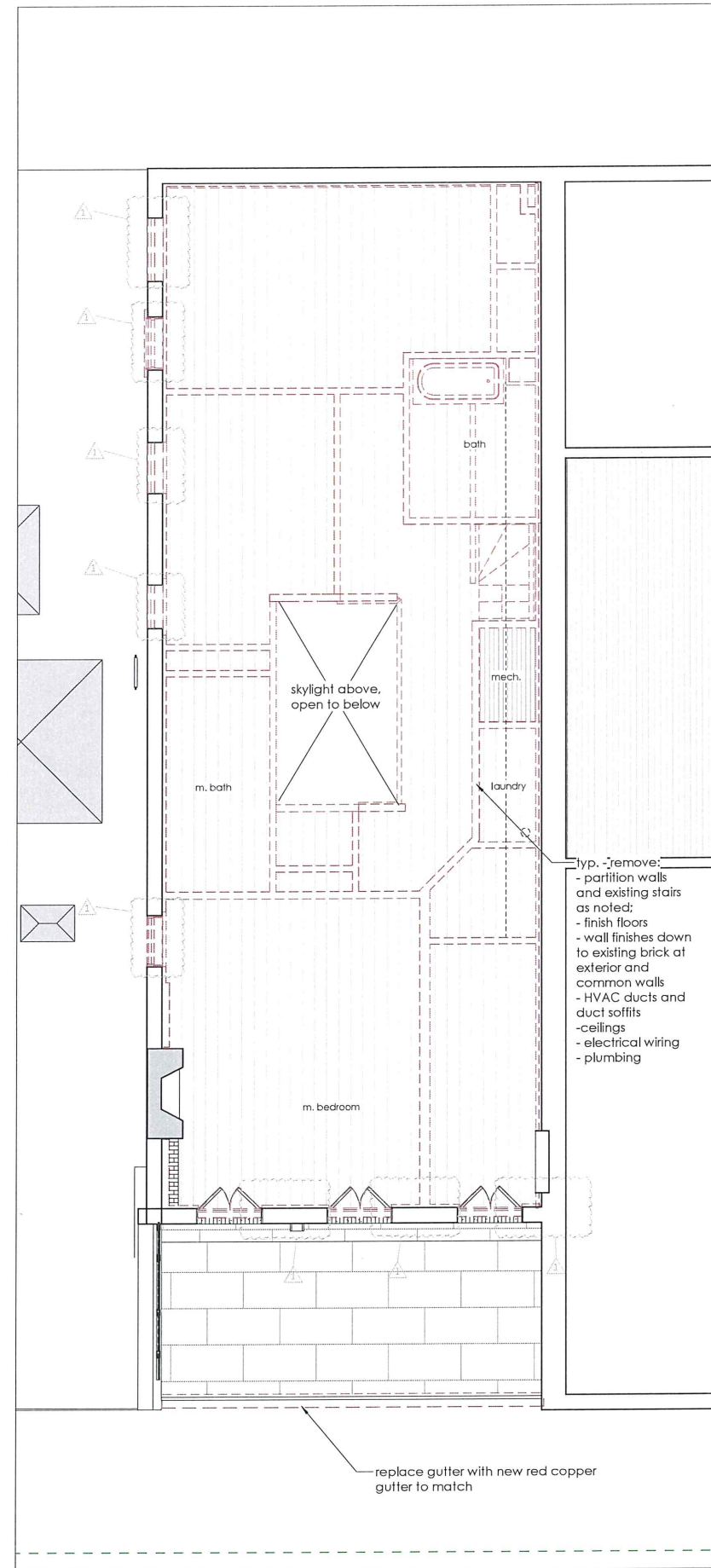
Framingham Survey Consultants Inc.  
CIVIL ENGINEER

Simpson Gumpertz Heger  
STRUCTURAL ENGINEER

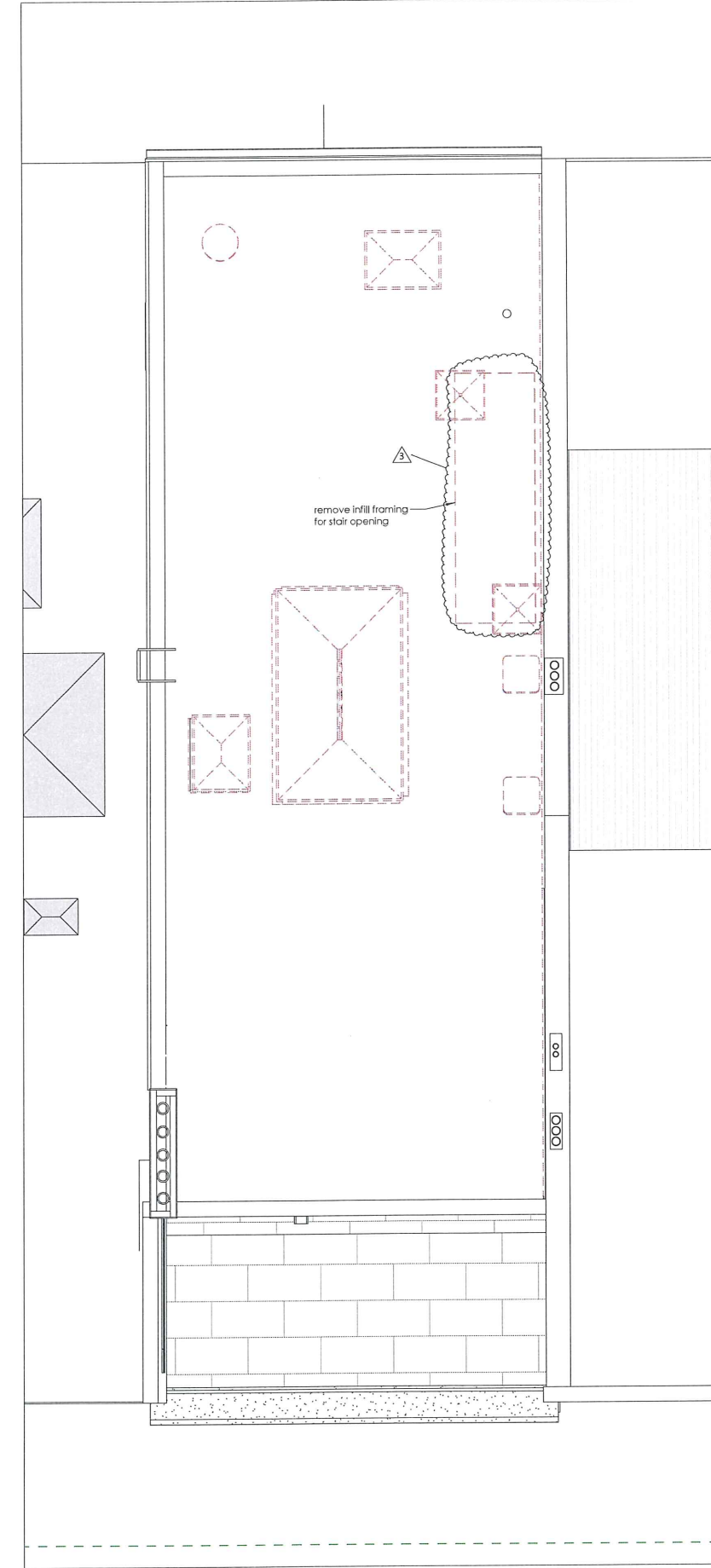
Allied  
MEP ENGINEER

Addendum #2  
05/16/2018

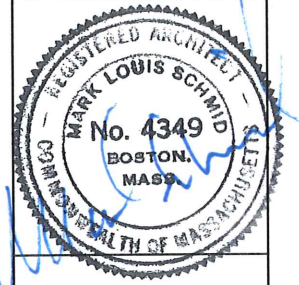




1 third floor - existing conditions & demo plan  
 AD.1.2 1/4" = 1'-0"



2 roof - Addendum #2  
 AD.1.2 1/4" = 1'-0"



Manioudakis Residence

83 Chestnut St,  
 Boston MA

DS Dewing Schmid Kearns  
 ARCHITECTS + PLANNERS

Suite 200B  
 30 Monument Square  
 Concord, MA 01742  
 978.371.7500

280 Elm Street  
 South Dartmouth  
 MA 02748

www.dskap.com

NO.	DATE	REVISION	BY
3	5/16/18	Addendum #2	
1	3/12/18	Addendum #1	

NO.	DATE	ISSUED TO	BY

TITLE  
 DEMOLITION  
 third floor + roof plan

DATE 05/16/2018

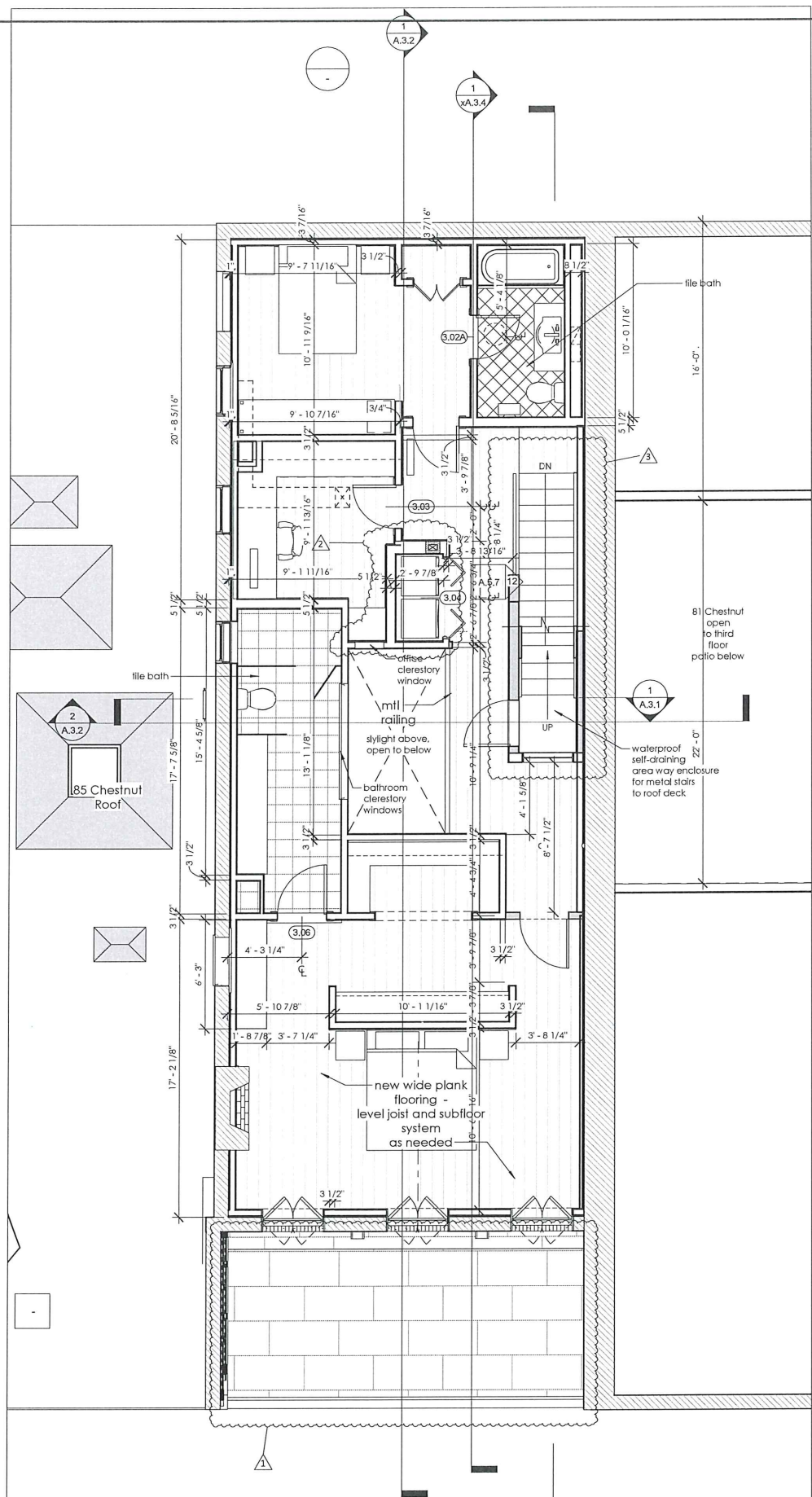
SCALE 1/4" = 1'-0"

JOB NO. 01739.00

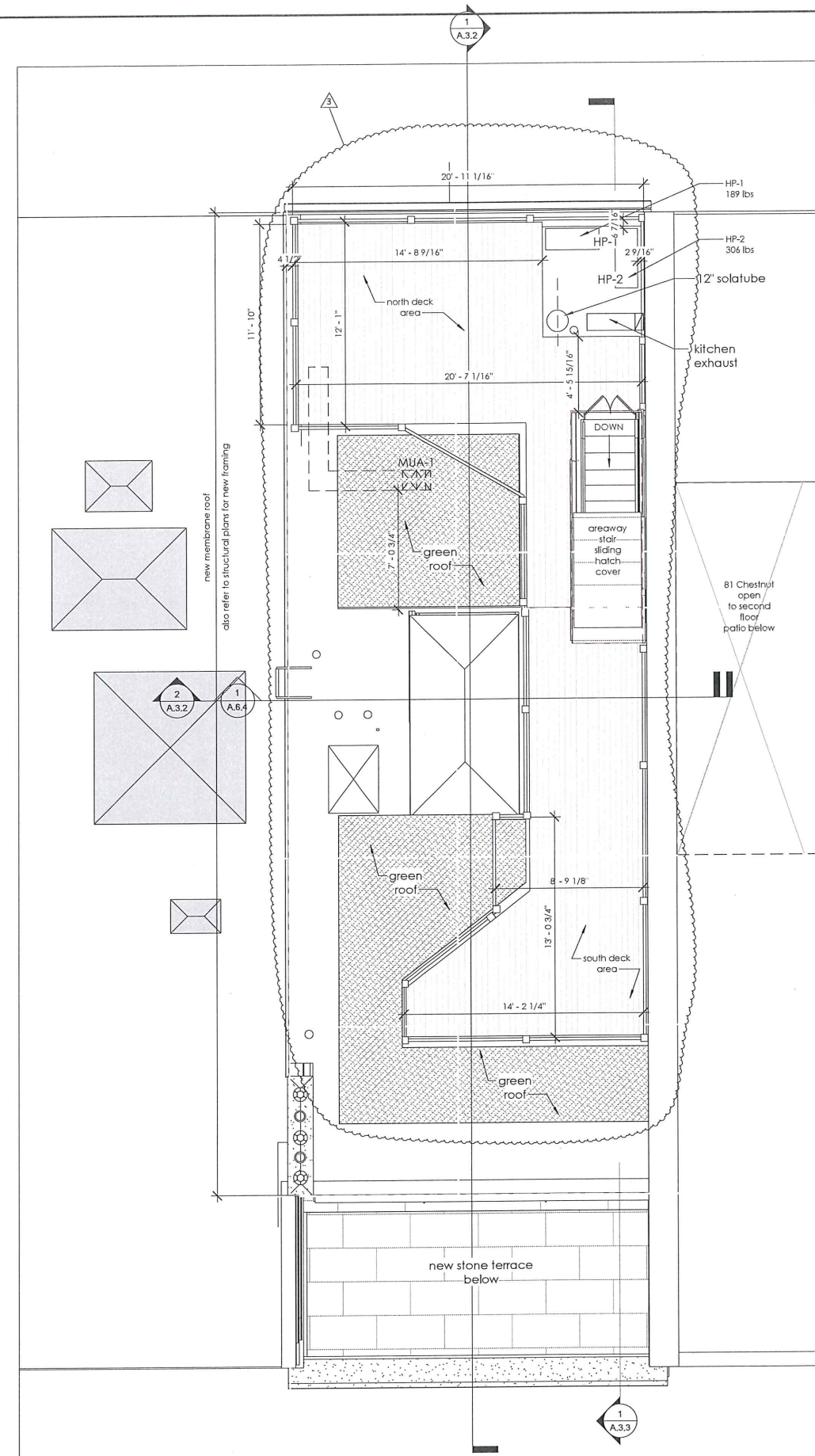
DRAWN BY dfm

AD.1.2

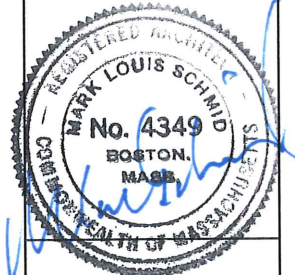
for construction



1 third floor - with stairs to roof  
A.1.1 1/4" = 1'-0"



3 proposed roofdeck & headhouse plan  
A.1.1 1/4" = 1'-0"



Manioudakis Residence

83 Chestnut St,  
Boston MA

DS Dewing Schmid Kearns  
ARCHITECTS + PLANNERS

Suite 200B  
30 Monument Square  
Concord, MA 01742  
978.371.7500

280 Elm Street  
South Dartmouth  
MA 02748  
www.dskap.com

NO.	DATE	REVISION	BY
3	5/16/18	Addendum #2	
2	4/24/18	Revision 1	
1	3/12/18	Addendum #1	

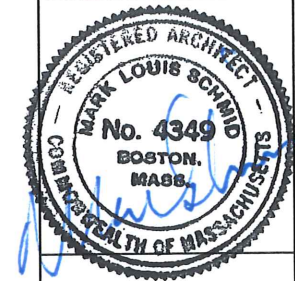
NO.	DATE	ISSUED TO	BY

TITLE  
PLANS:  
third floor + roof plans

DATE 05/16/2018  
SCALE 1/4" = 1'-0"  
JOB NO. 01739.00  
DRAWN BY dfm

A.1.1

for construction



# Manioudakis Residence

83 Chestnut St,  
Boston MA

**DS** Dewing Schmid Kearns  
ARCHITECTS + PLANNERS

Suite 200B  
30 Monument Square  
Concord, MA 01742  
978.371.7500

280 Elm Street  
South Dartmouth  
MA 02748  
[www.dskap.com](http://www.dskap.com)

NO.	DATE	REVISION	BY
3	5/16/18	Addendum #2	
1	3/12/18	Addendum #1	

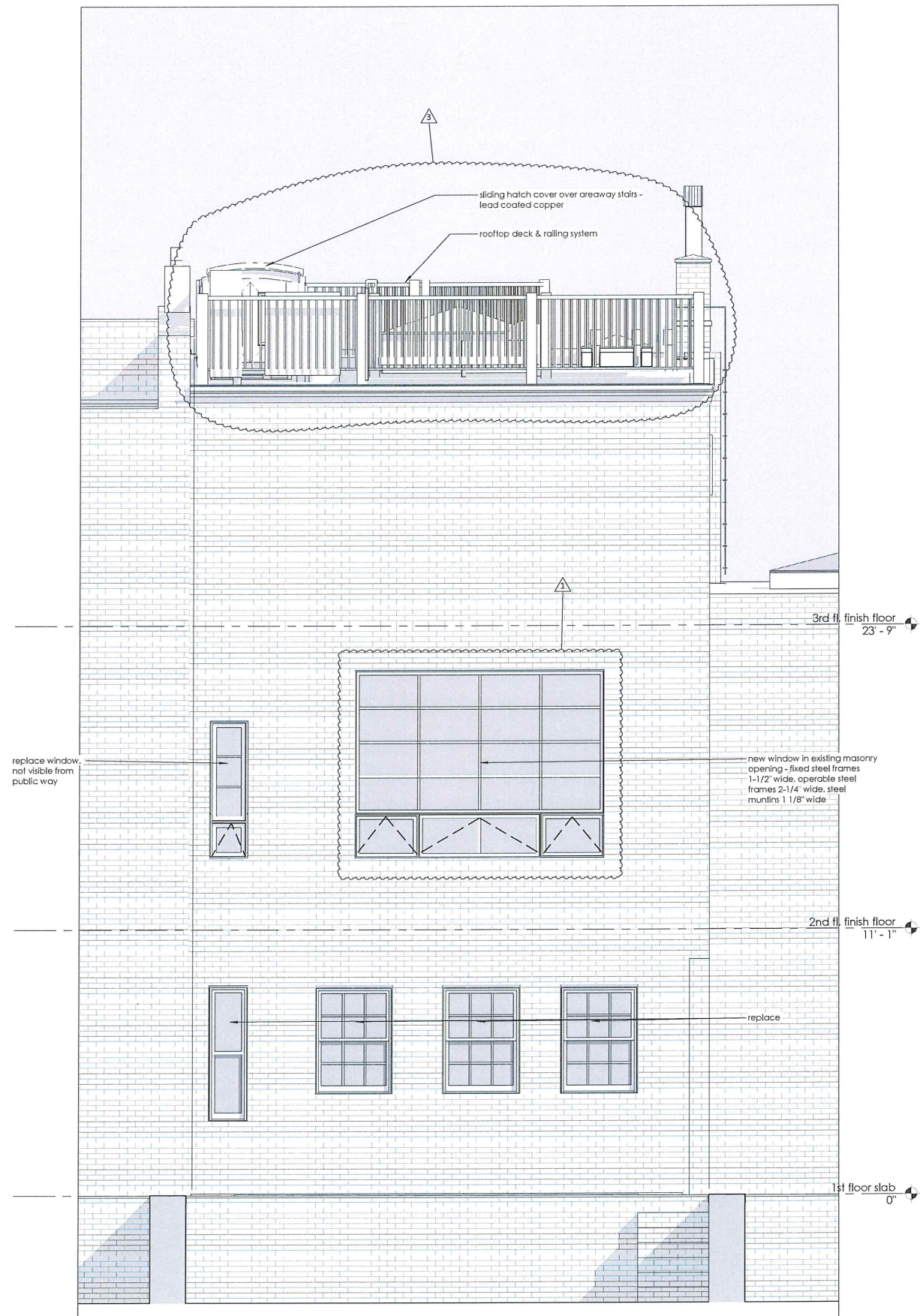
NO.	DATE	ISSUED TO	BY
-----	------	-----------	----

TITLE  
ELEVATIONS:  
north and south  
elevation

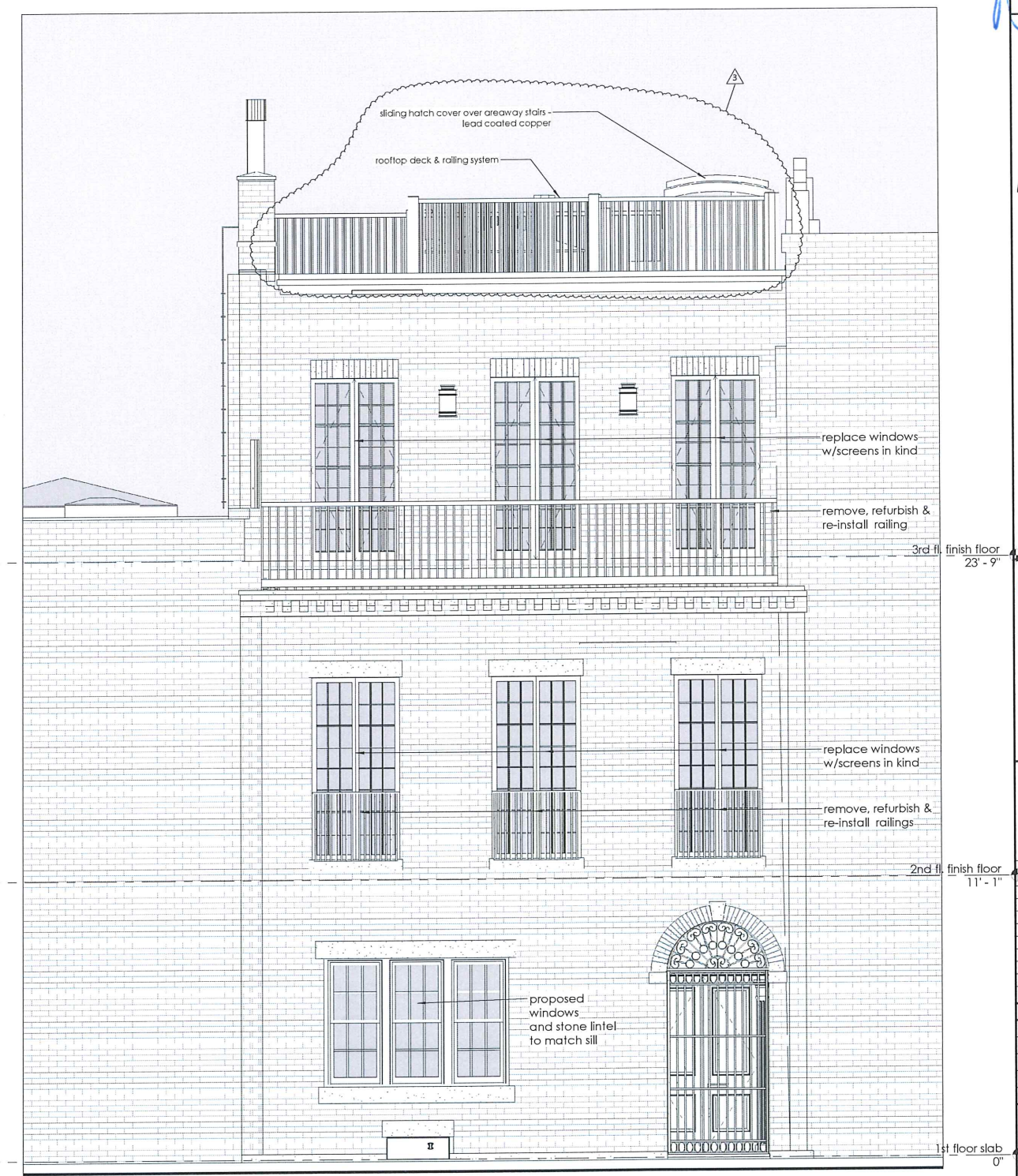
DATE 05/16/2018  
SCALE 3/8" = 1'-0"  
JOB NO. 01739.00  
DRAWN BY dfm

## A.2.1.2

for construction



2 north - addendum #2  
A.2.1.2 3/8" = 1'-0"



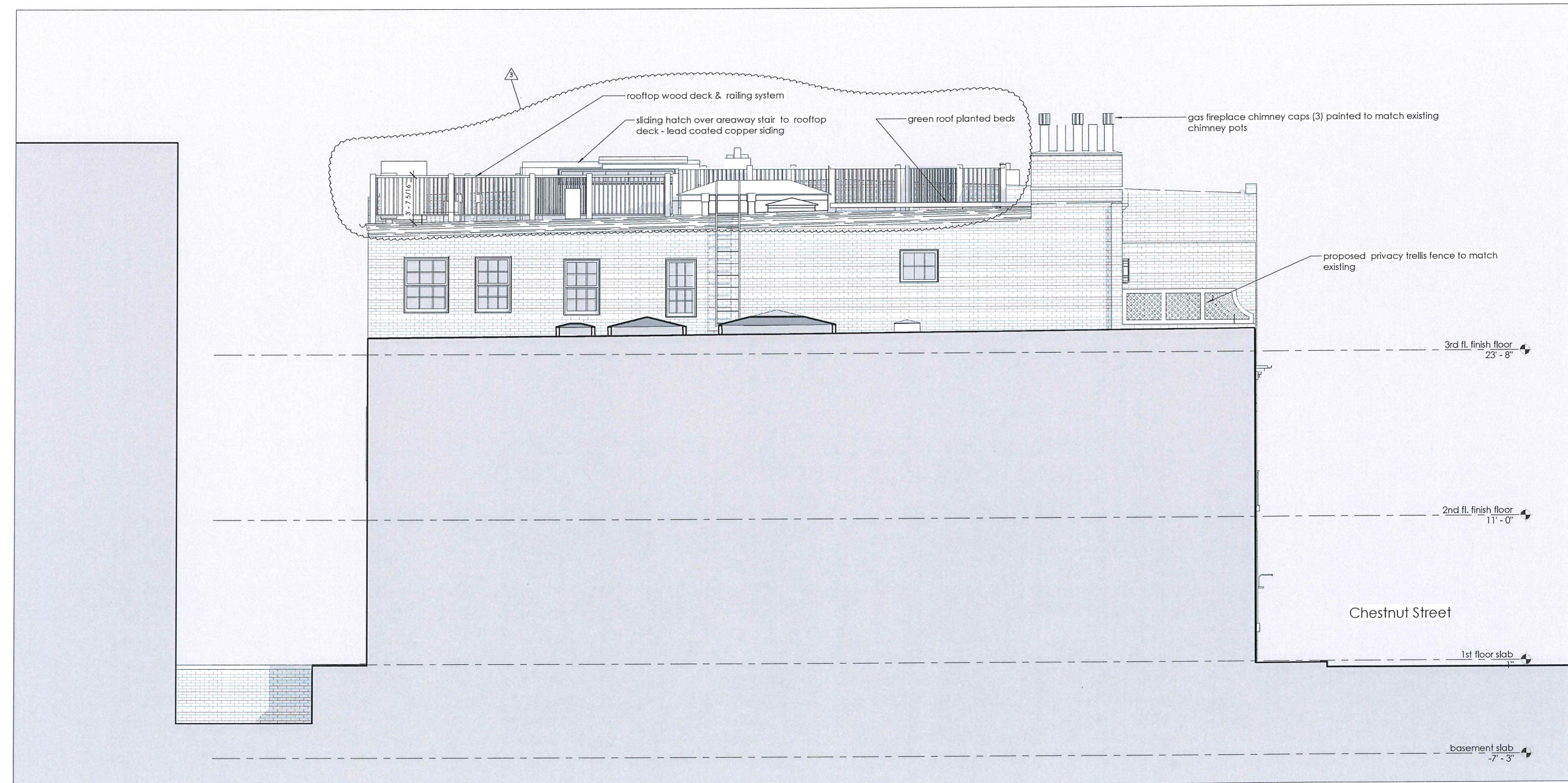
1 south - addendum #2  
A.2.1.2 3/8" = 1'-0"

C:\Users\ludmy\Documents\CENTRAL\_0179 Manioudakis Residence.dwg 5/16/2018 11:18:51 AM



# Manioudakis Residence

83 Chestnut St,  
Boston MA



1 west - building elevation with deck  
A.2.3 1/4" = 1'-0"

**DS** Dewing Schmid Kearns  
ARCHITECTS + PLANNERS

Suite 200B  
30 Monument Square  
Concord, MA 01742  
978.371.7500

280 Elm Street  
South Dartmouth  
MA 02748  
[www.dskap.com](http://www.dskap.com)

NO.	DATE	REVISION	BY
3	5/16/18	Addendum #2	

NO.	DATE	ISSUED TO	BY

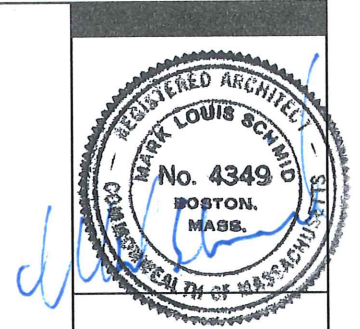
TITLE  
ELEVATIONS:  
west elevation

DATE	05/16/2018
SCALE	1/4" = 1'-0"
JOB NO.	01739.00
DRAWN BY	dfm

# A.2.3

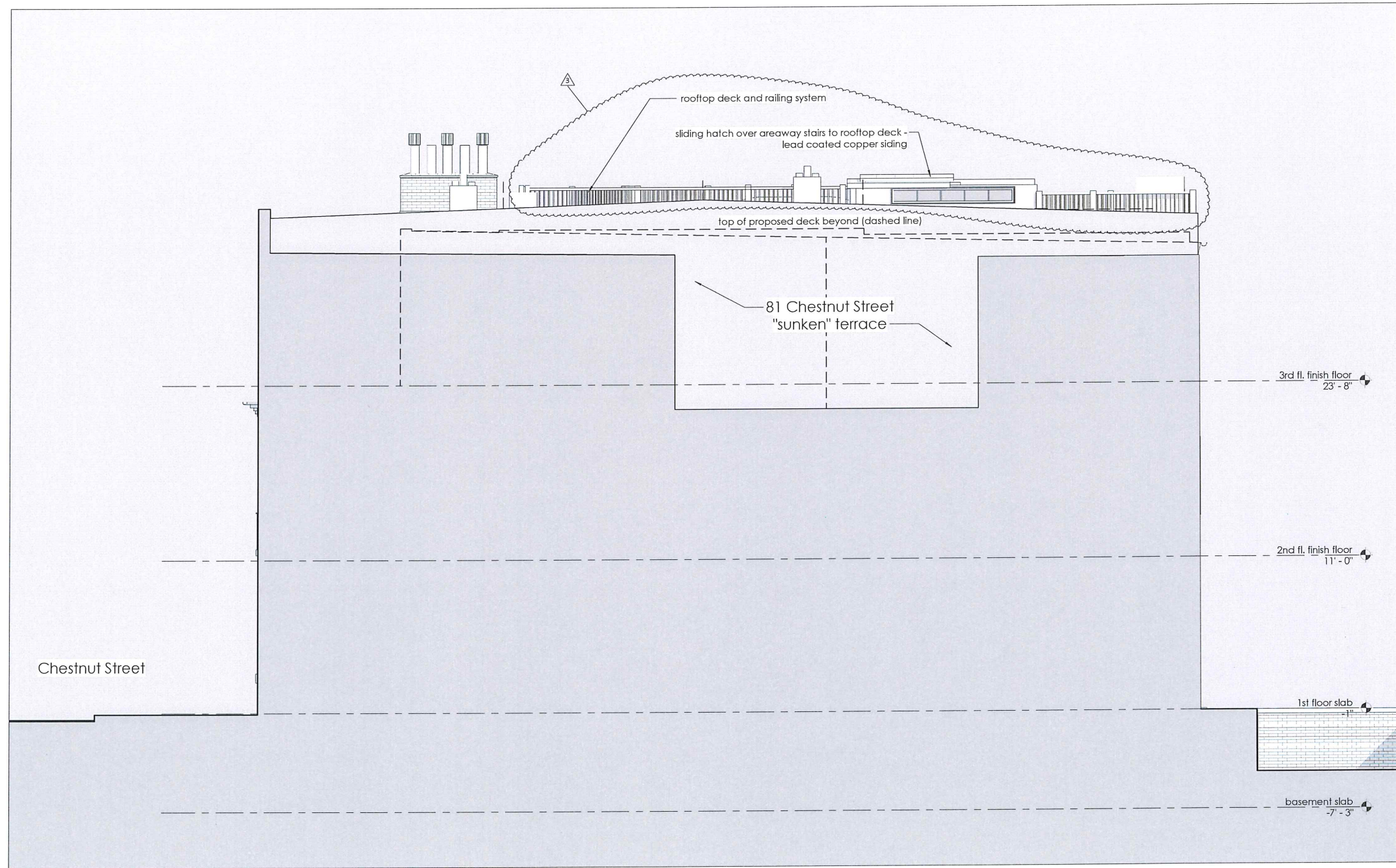
for construction

C:\Users\ldenny\Documents\CENTRAL\2179 Manioudakis Residence.dgn 5/16/2018 11:19:01 AM



# Manioudakis Residence

83 Chestnut St,  
Boston MA



**DS** Dewing Schmid Kearns  
ARCHITECTS + PLANNERS

Suite 200B  
30 Monument Square  
Concord, MA 01742  
978.371.7500

280 Elm Street  
South Dartmouth  
MA 02748  
[www.dskap.com](http://www.dskap.com)

NO.	DATE	REVISION	BY
3	5/16/18	Addendum #2	

NO.	DATE	ISSUED TO	BY

TITLE  
ELEVATIONS:  
east elevation

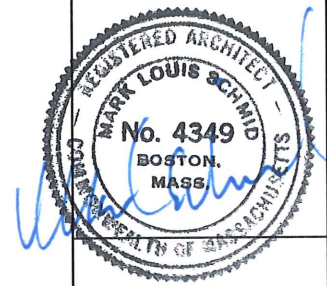
1  
A.2.4 east - building elevation with deck  
1/4" = 1'-0"

DATE 05/16/2018  
SCALE 1/4" = 1'-0"  
JOB NO. 01739.00  
DRAWN BY dfm

**A.2.4**

for construction

C:\Users\lshay\Documents\CENTRAL\_0179\_Manioudakis\_Residence.dwg 5/16/2018 11:19:07 AM



# Manioudakis Residence

83 Chestnut St,  
Boston MA

**DS** Dewing Schmid Kearns  
ARCHITECTS + PLANNERS

Suite 200B  
30 Monument Square  
Concord, MA 01742  
978.371.7500

280 Elm Street  
South Dartmouth  
MA 02748  
[www.dskap.com](http://www.dskap.com)

NO.	DATE	REVISION	BY
3	5/16/18	Addendum #2	

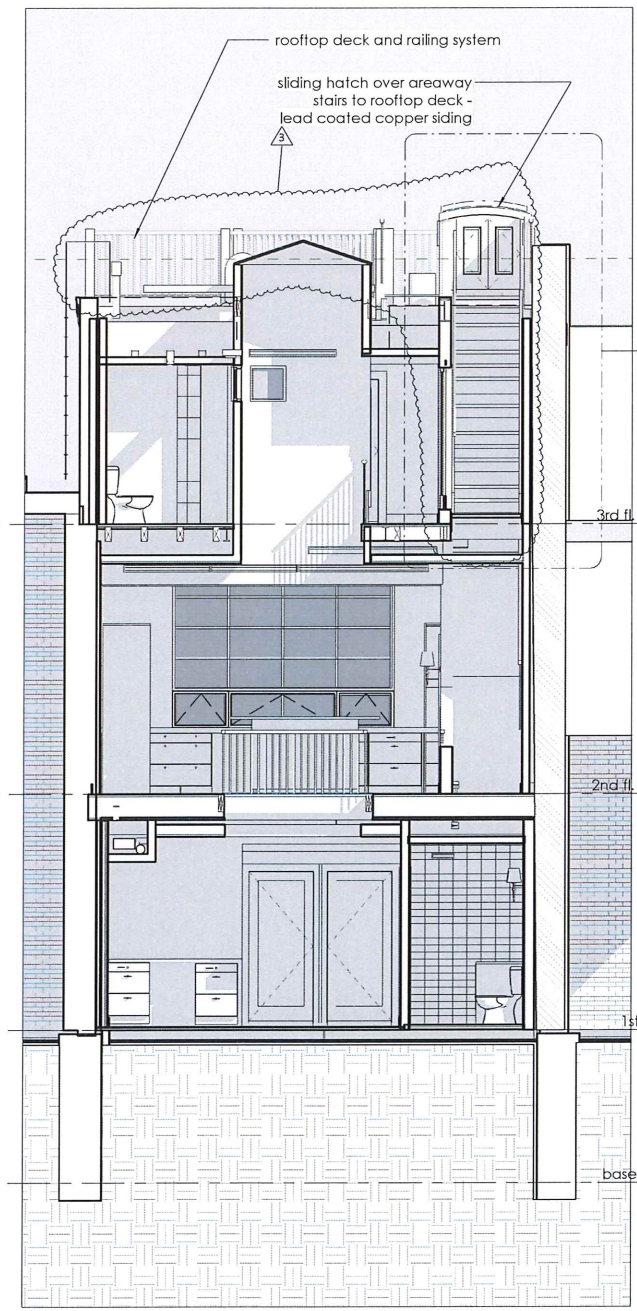
NO.	DATE	ISSUED TO	BY
-----	------	-----------	----

SECTIONS:  
building section  
through skylight - view  
east

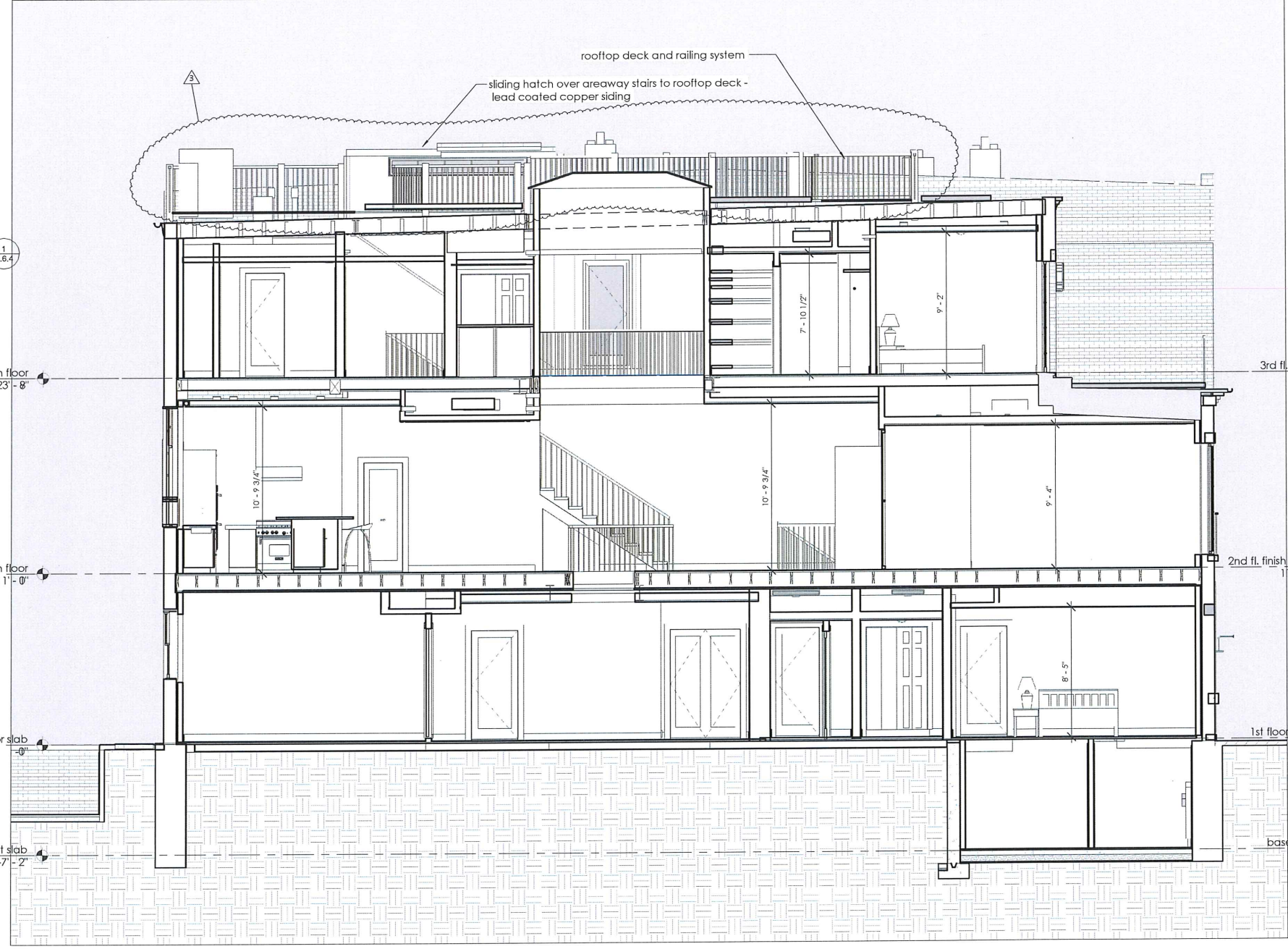
DATE 05/16/2018  
SCALE 1/4" = 1'-0"  
JOB NO. 01739.00  
DRAWN BY Author

## A.3.2

for construction



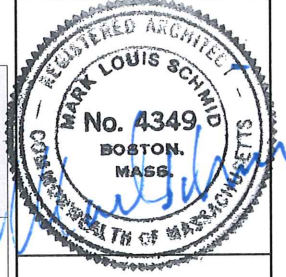
**2**  
A.3.2  
cross section - view north  
1/4" = 1'-0"



**1**  
A.3.2  
longitudinal section through skylight - view east  
1/4" = 1'-0"



C:\Users\jv\My Documents\CENTRAL\279 Manioudakis Residence.dwg 5/16/2018 11:19:10 AM



# Manioudakis Residence

83 Chestnut St, Boston MA

**DS** Dewing Schmid Kearns ARCHITECTS + PLANNERS

Suite 200B  
30 Monument Square  
Concord, MA 01742  
978.371.7500

280 Elm Street  
South Dartmouth  
MA 02748  
[www.dskap.com](http://www.dskap.com)

NO.	DATE	REVISION	BY
3	5/16/18	Addendum #2	

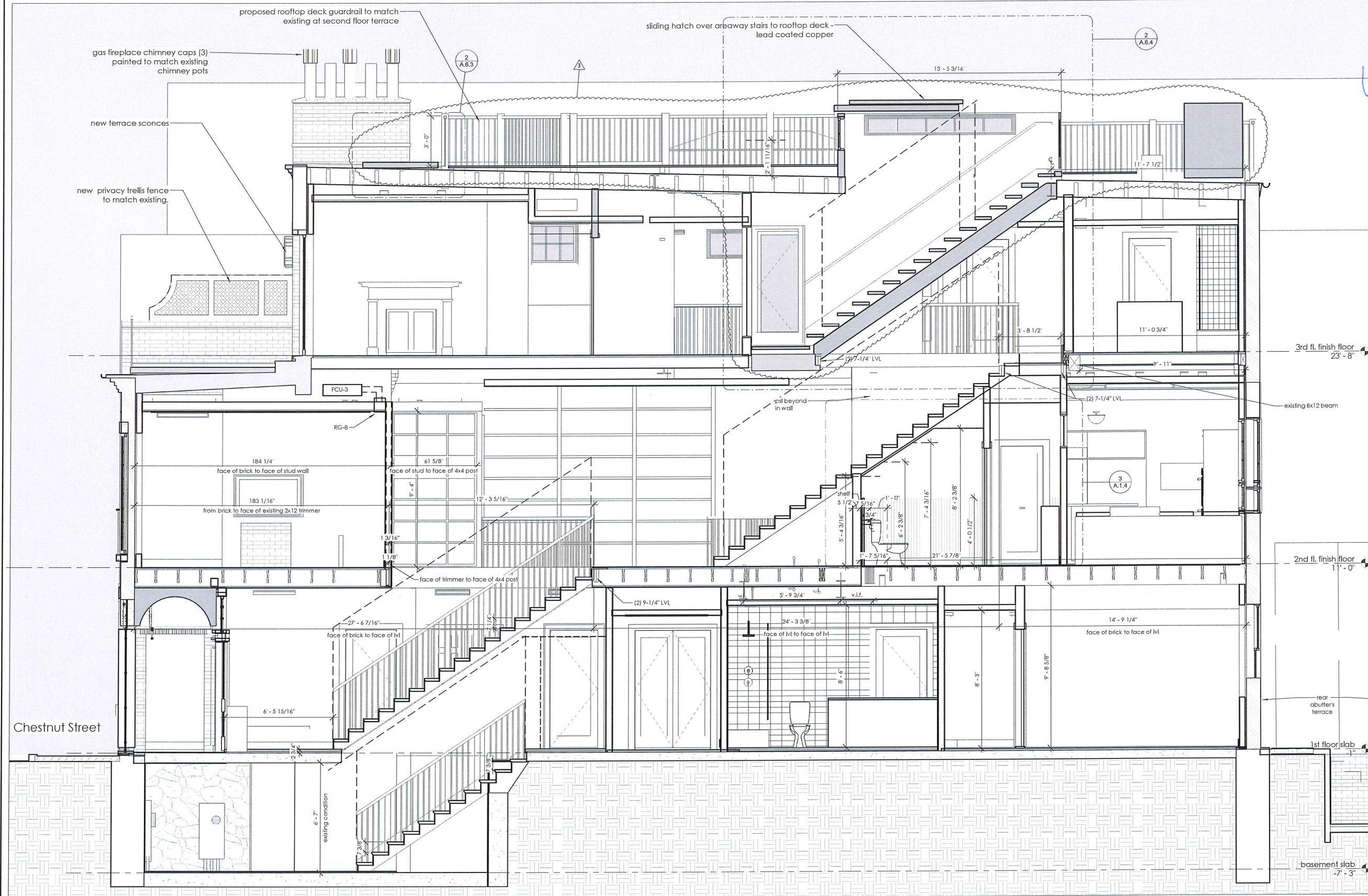
NO.	DATE	ISSUED TO	BY

SECTIONS:  
building section  
through stairs

DATE 05/16/2018  
SCALE 3/8" = 1'-0"  
JOB NO. 01739.00  
DRAWN BY Author

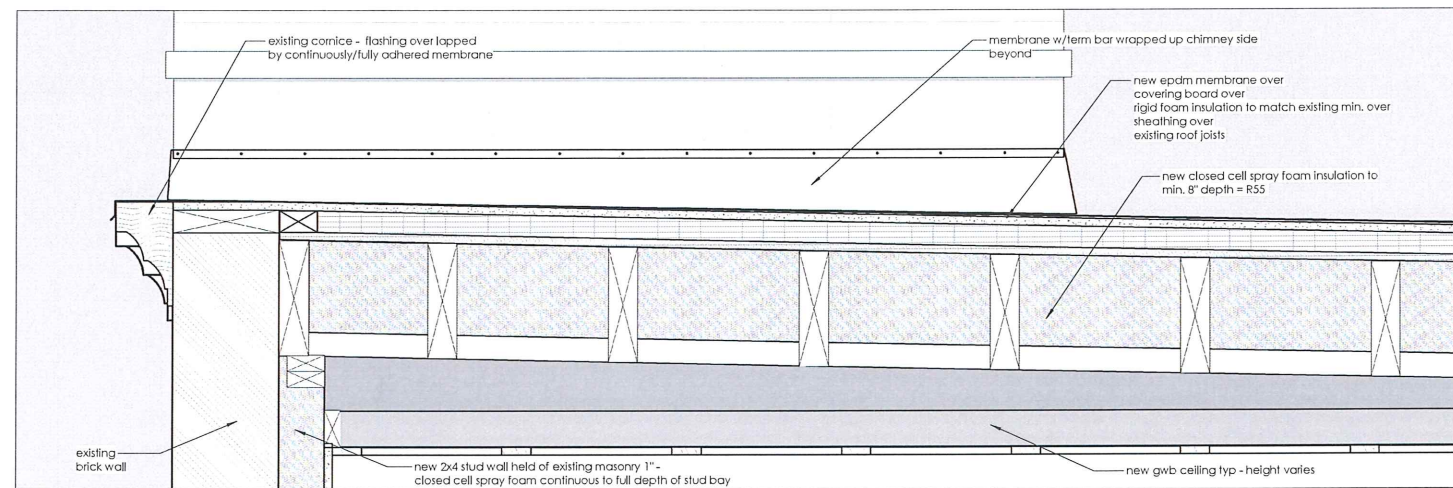
# A.3.3

for construction

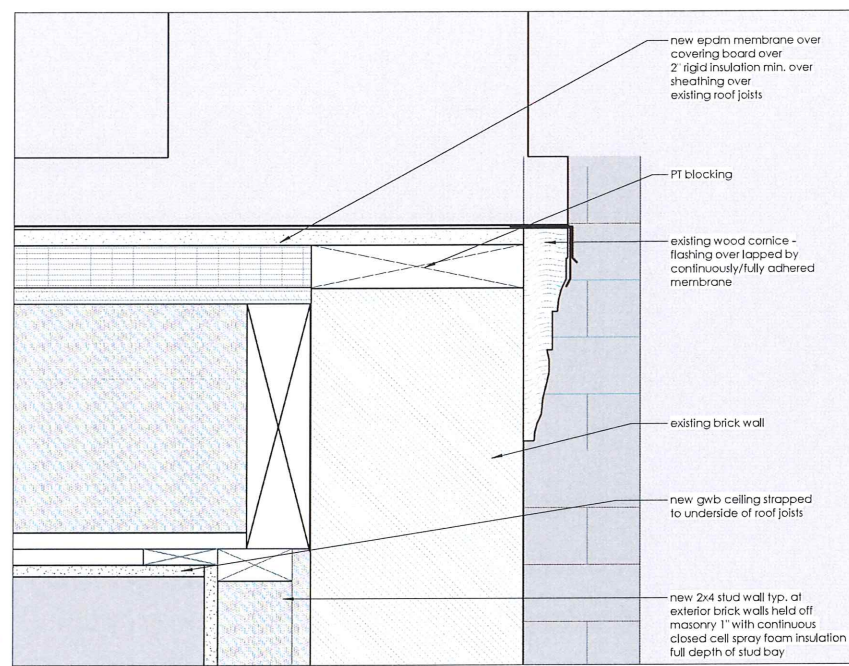


**1** building section - through stairs + headhouse, view west  
A.3.3 3/8" = 1'-0"

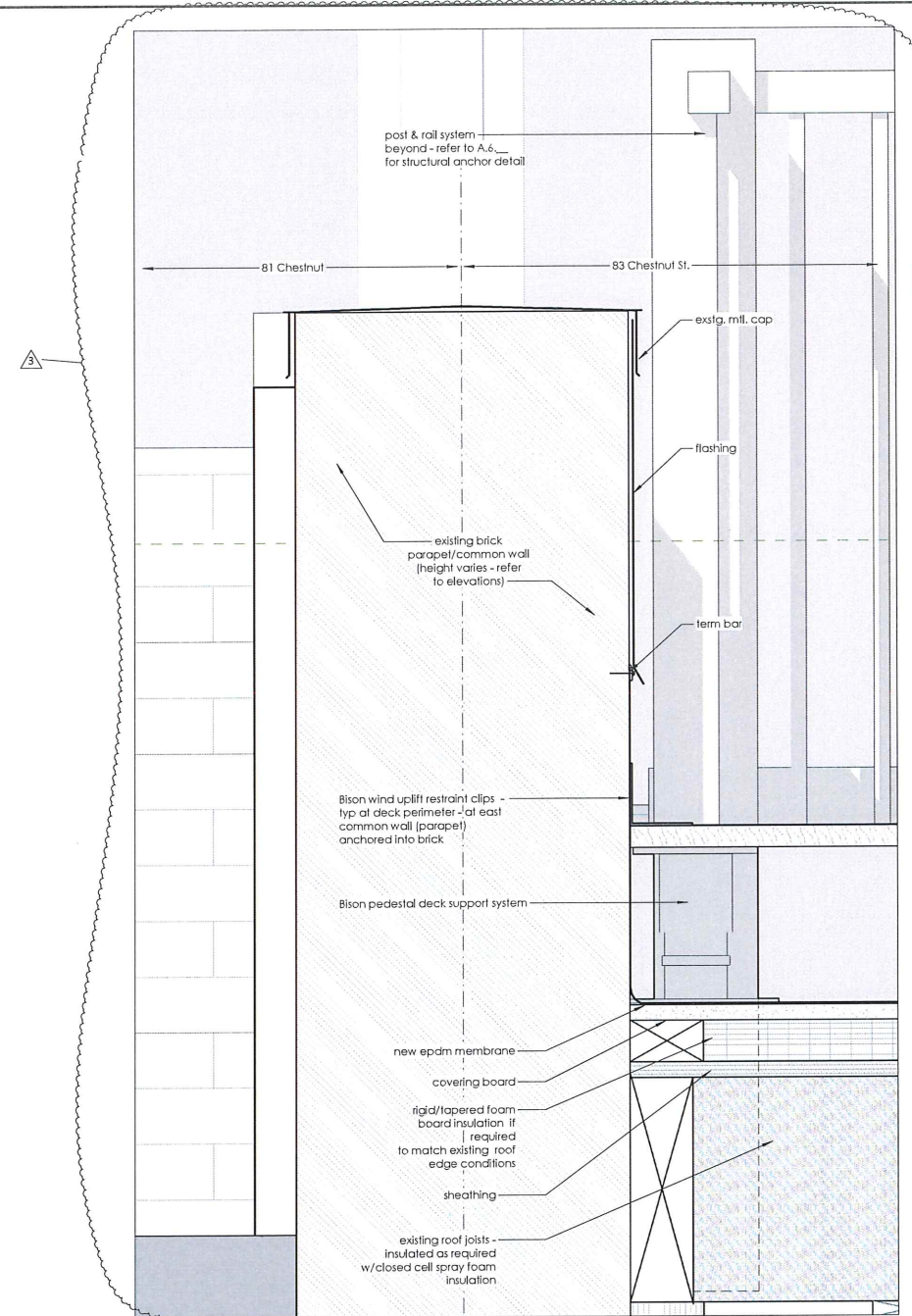
C:\Users\jv\myDocuments\CENTRAL\0739 Manioudakis Residence.dwg 5/16/2018 11:19:14 AM



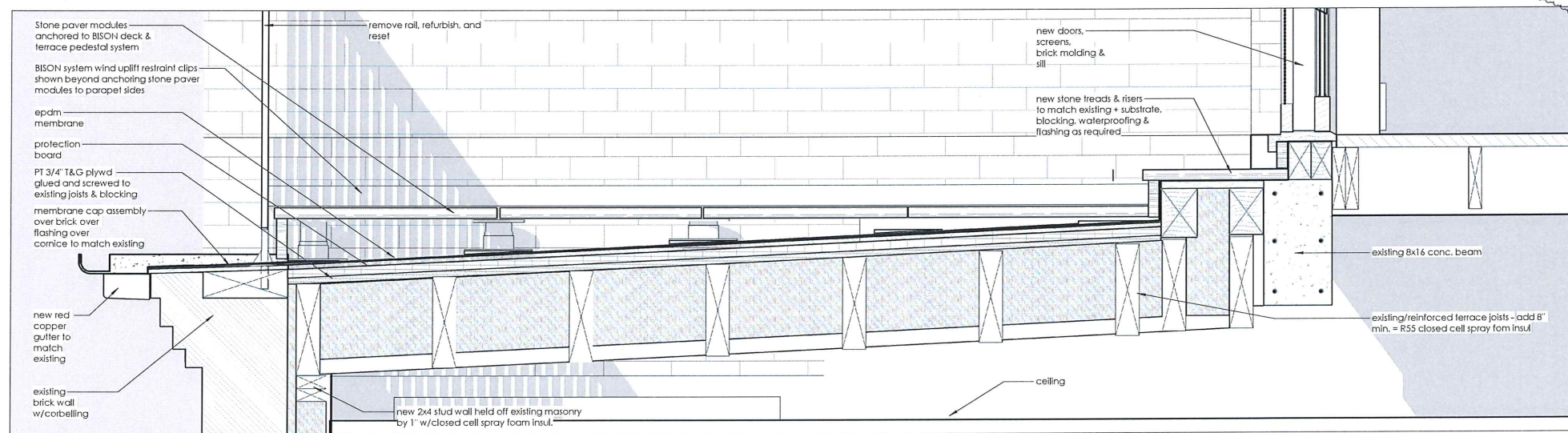
5 roof  
A.6.1 1 1/2" = 1'-0"



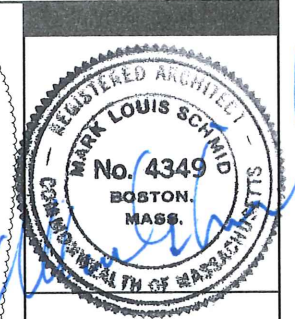
3 roof west edge  
A.6.1 3" = 1'-0"



4 roof east edge - deck at parapet  
A.6.1 3" = 1'-0"



1 terrace  
A.6.1 1 1/2" = 1'-0"



Manioudakis Residence

83 Chestnut St,  
Boston MA

DS Dewing Schmid Kearns  
ARCHITECTS + PLANNERS

Suite 200B  
30 Monument Square  
Concord, MA 01742  
978.371.7500

280 Elm Street  
South Dartmouth  
MA 02748  
www.dskap.com

NO.	DATE	REVISION	BY
3	5/16/18	Addendum #2	

NO.	DATE	ISSUED TO	BY

TITLE  
SECTIONS:  
exterior details - roof

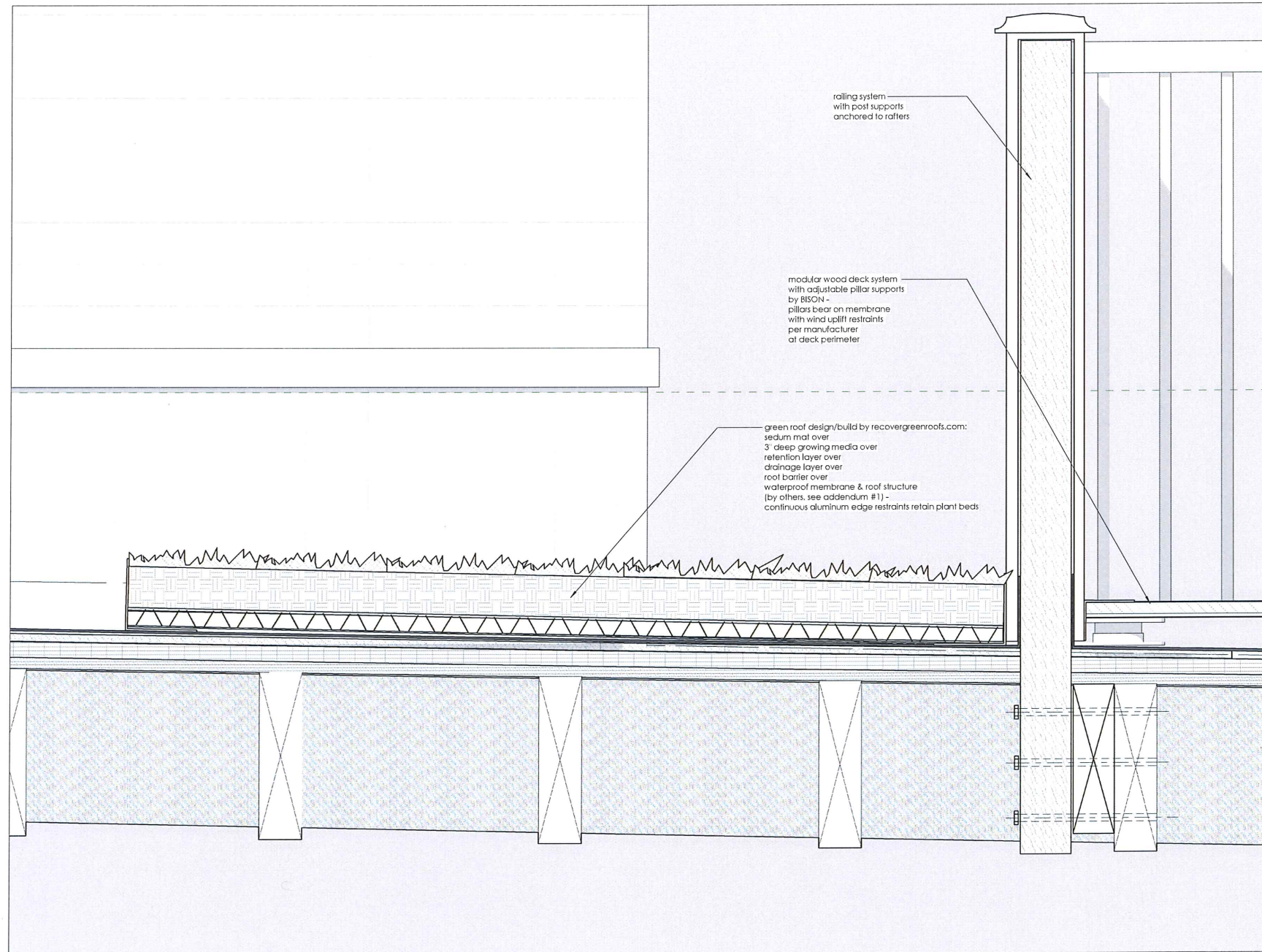
DATE 05/16/2018

SCALE As indicated  
JOB NO. 01739.00

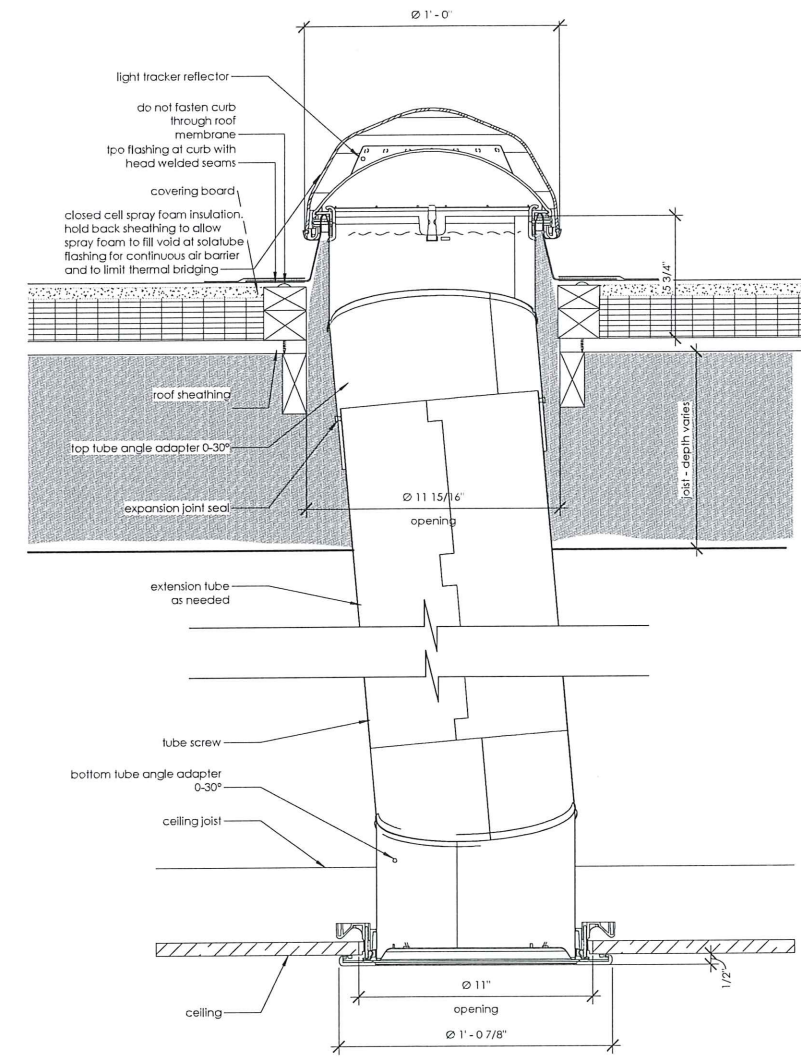
DRAWN BY dfm

A.6.1

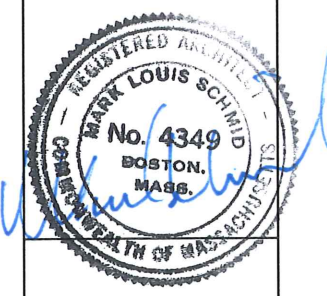
for construction



2 deck perimeter, railing & green roof beds  
A.6.3 3" = 1'-0"



1 solatube  
A.6.3 3" = 1'-0"



Manioudakis Residence

83 Chestnut St,  
Boston MA

**DS** Dewing Schmid Kearns  
ARCHITECTS + PLANNERS  
Suite 200B  
30 Monument Square  
Concord, MA 01742  
978.371.7500  
280 Elm Street  
South Dartmouth  
MA 02748  
[www.dskap.com](http://www.dskap.com)

NO.	DATE	REVISION	BY
3	5/16/18	Addendum #2	

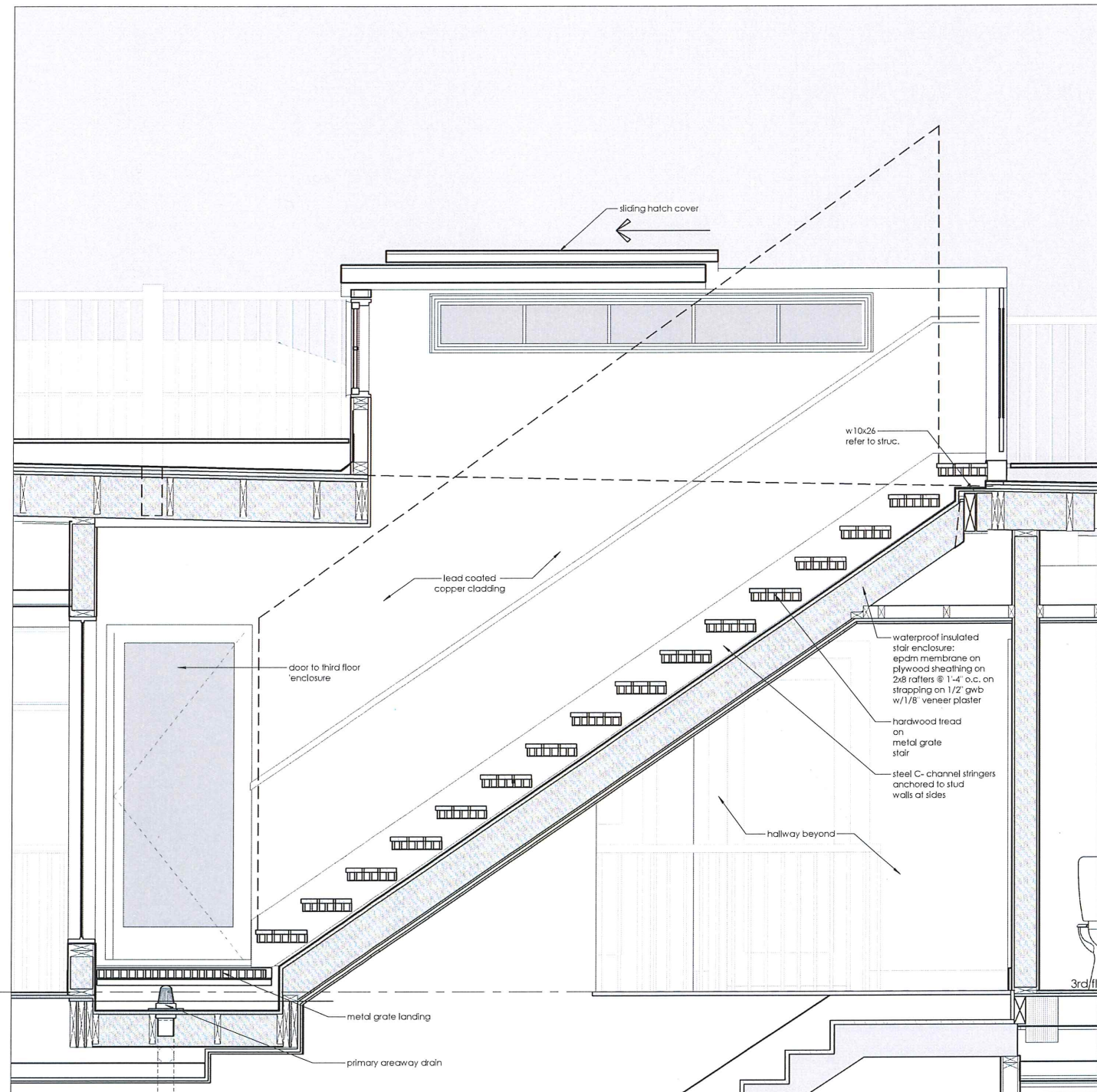
NO.	DATE	ISSUED TO	BY

TITLE  
DETAILS  
exterior details - roof

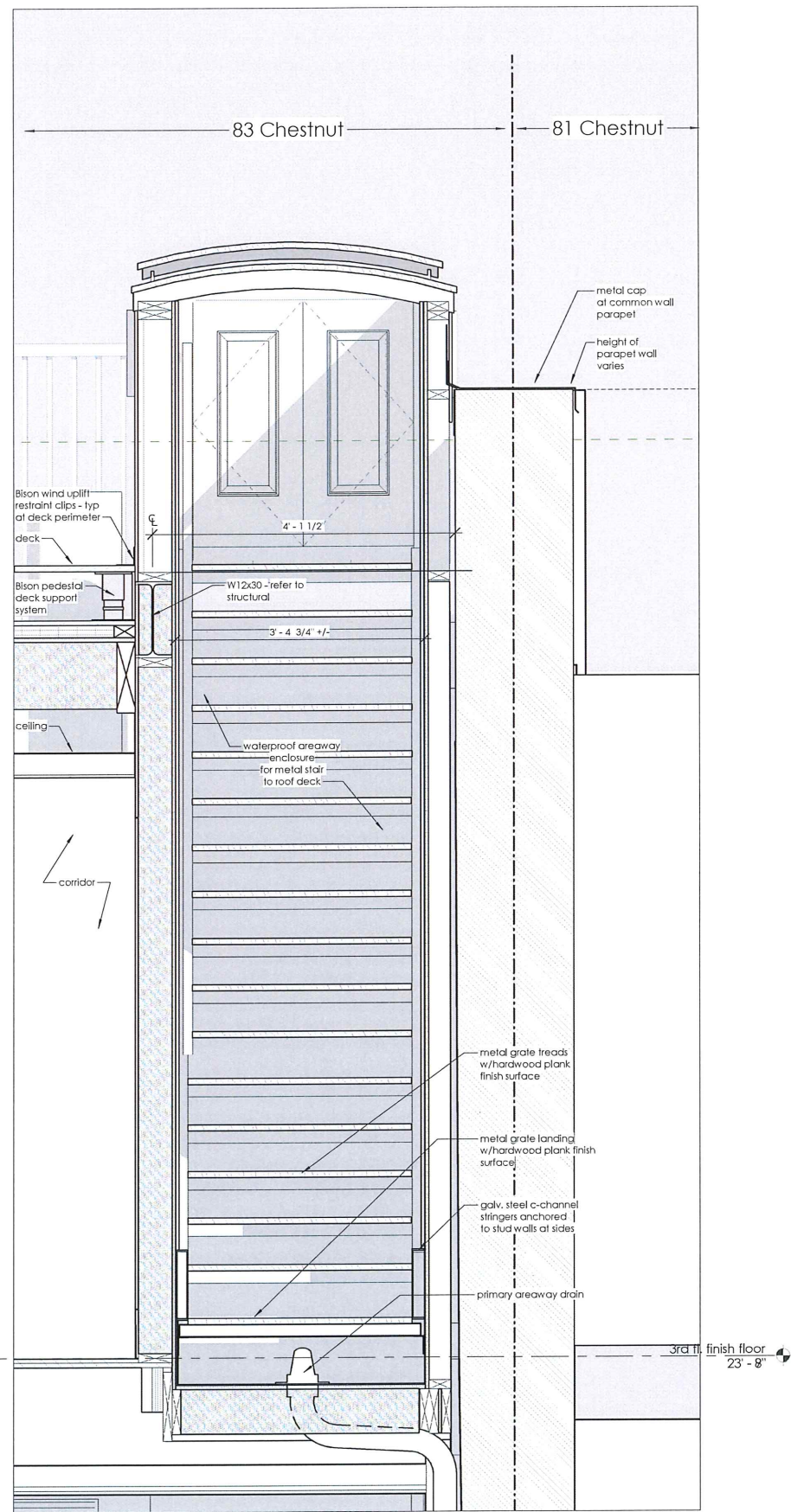
DATE 05/16/2018  
SCALE 3" = 1'-0"  
JOB NO. 01739.00  
DRAWN BY dfm

**A.6.3**

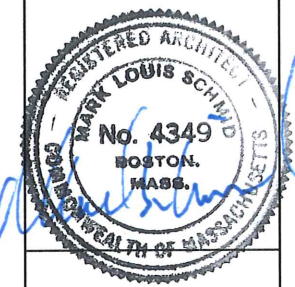
for construction



2 longitudinal detail section through areaway stairs + hatch  
A.6.4 3/4" = 1'-0"



1 transverse section through areaway stairs  
A.6.4 1" = 1'-0"



Manioudakis Residence

83 Chestnut St,  
Boston MA

DS Dewing Schmid Kearns  
ARCHITECTS + PLANNERS

Suite 200B  
30 Monument Square  
Concord, MA 01742  
978.371.7500

280 Elm Street  
South Dartmouth  
MA 02748  
www.dskap.com

NO.	DATE	REVISION	BY
3	5/16/18	Addendum #2	

NO.	DATE	ISSUED TO	BY

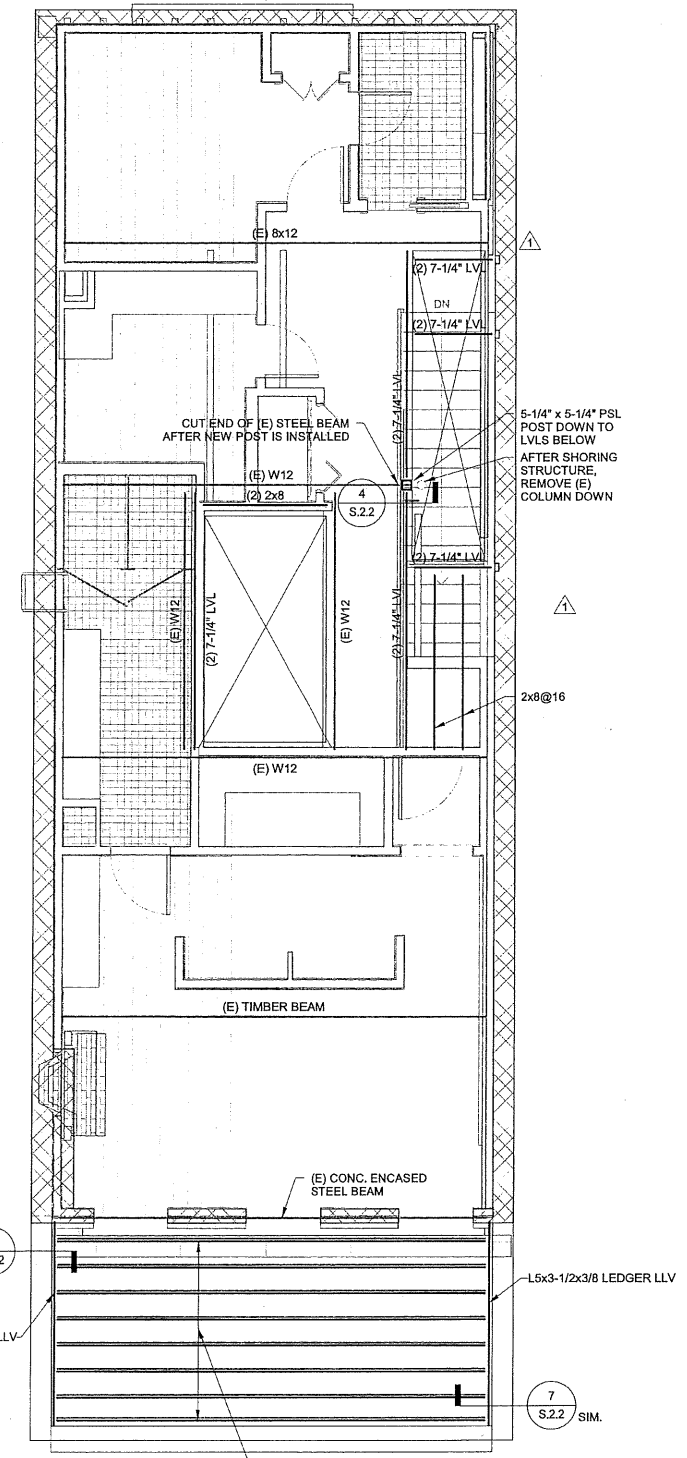
TITLE  
PLANS:  
Roof Deck Exterior  
Areaway Stairs & Hatch

DATE 05/16/2018  
SCALE As indicated  
JOB NO. 01739.00  
DRAWN BY Author

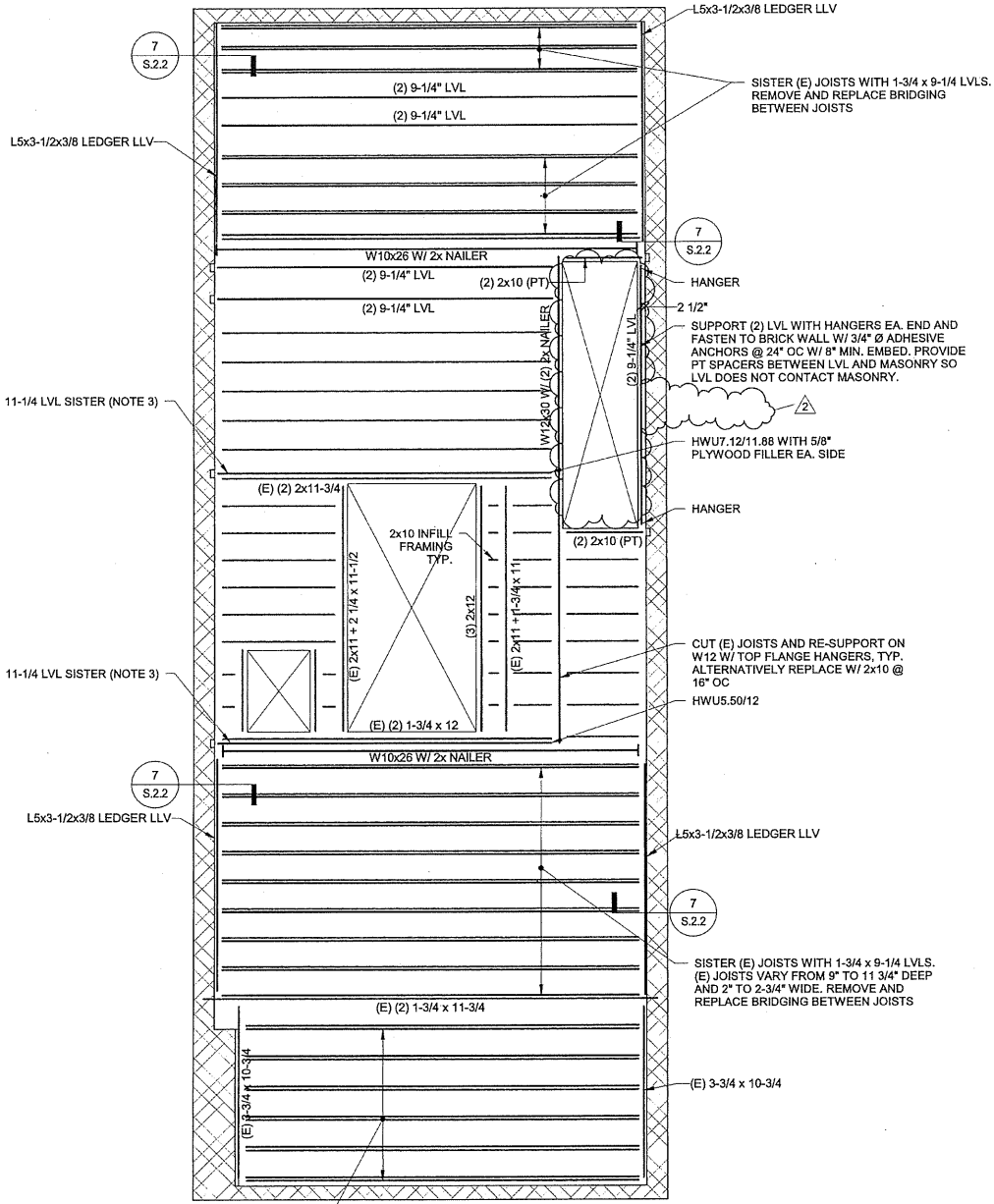
A.6.4

for construction

I:\BOM\Projects\2017\172760-CHSTN\Drawings\Working\SP1\_Rev\LOCAL USERS\FBou-Nashr\1717276\_00\_1717\_2E\_CHESTNUT\_FRM-Nashr.rvt 5/15/2018 9:58:27 AM



**1 THIRD FLOOR FRAMING PLAN**  
1/4" = 1'-0"



**2 ROOF FRAMING PLAN**  
1/4" = 1'-0"

- SHEET NOTES**
- SEE ARCHITECTURAL DRAWING FOR DIMENSIONS NOT SHOWN.
  - SEE S.0.1 FOR GENERAL STRUCTURAL NOTES.
  - WHERE NOTED, SCREW LVL SISTER TO (E) JOIST W/ 2 ROWS OF 4" TIMBERLOK SCREWS @ 12" OC STAGGERED WITH 5" BETWEEN ROWS. POCKET SISTERS INTO WALL PER 1/S.2.2 SIM.
  - SEE 1/S.2.2 FOR TYPICAL FLOOR LEVELING DETAIL.

**LEGEND**

	BEAM OR JOIST POCKET, SEE 1&2/S.2.2
	BEAM BRACKET, SEE 5/S.2.2
	HIGH-CAPACITY BEAM BRACKET, SEE 5/S.2.2

## Manioudakis Residence

83 Chestnut Street  
BOSTON, MA

**SIMPSON GUMPERTZ & HEGER**  
Engineering of Structures  
Simpson Gumpertz & Heger Inc.  
41 Seyon Street, Building 1, Suite 500  
Waltham, Massachusetts 02453  
main: 781.907.9000 fax: 781.907.9009  
www.sgh.com

**DSK** Dewing Schmid Kearns  
ARCHITECTS + PLANNERS  
Suite 200B  
30 Monument Square  
Concord, MA 01742  
978.371.7500  
280 Elm Street  
South Dartmouth  
MA 02748  
www.dskap.com

NO.	DATE	REVISION	BY
2	5/15/18	ADDENDUM 2	MDW
1	3/12/18	ADDENDUM 1	MDW

NO DATE ISSUED BY  
TITLE  
**UPPER FLOOR PLANS**

DATE 10/25/17  
SCALE 1/4" = 1'-0"  
JOB NO. 01739.00  
DRAWN GEF

**S.1.1**

for